



**PJ Master**  
**Owner's Manual**

POA-PJNM01

---

## Trademarks

The PJ Master is a trademark of Sanyo Electric Co., Ltd. Microsoft, Windows, Windows 2000, Windows XP, Microsoft SQL Server 2000 Desktop Engine (MSDE2000A) are registered trademarks of Microsoft Corporation. Other products or brand names in this manual are registered trademarks or trademarks of their respective owners.

\* Unauthorized use of a part or whole of the contents in this manual is prohibited.

\* The contents of this manual are subject to change without notice.

<b>Chapter 1 Introduction</b>	5
Overview	6
Features	6
System chart	6
Operating environment	7
<b>Chapter 2 Setup</b>	9
Software installation	10
Microsoft SQL Sever Desktop Engine 2000A installation	10
PJ Master installation	11
Service starting confirmation	14
Uninstallation	14
<b>Chapter 3 Basic operation</b>	15
Launching PJ Master	16
Name of status window	16
Quitting PJ Master	16
Operation	17
Menu tree	17
Name of the buttons on the tool bar	18
Execution of the commands	18
Status display of icons	18
When the alert occurs on the target or server	19
Creating the group information	19
Adding the server and target	19
Adding the top server	20
Adding the sub server	20
Important notice on license key entry	20
Editing the server information	21
Deleting the server	21
Adding the target	21
Editing the target information	22
Deleting the target	22
Reflecting the group information	22
Canceling the group information	23
Import the group information from the defined file	23
Export the group information	24
System setting	25
Interval time setting	25
Temperature selection	25
Warning reception setting	26
When the warning occurs	26
Encryption setting	27

IP Address setting. . . . .	27
Customizing the display columns . . . . .	28
Changing the status column indication . . . . .	28
Font setting. . . . .	29
Changing fonts on the status list. . . . .	29
Warning value setting . . . . .	29
Warning time/temperature setting . . . . .	30
Global setting . . . . .	31
Sending a command . . . . .	31
Default commands for projector . . . . .	32
Default commands for PDP monitor. . . . .	32
Editing the predefined command. . . . .	33
Condition setting . . . . .	33
Condition setting example . . . . .	34
Viewing the status, alert and logs. . . . .	35
Viewing the status of target or server. . . . .	35
Viewing the alert information. . . . .	36
Viewing the logs. . . . .	36
Reading of Error log. . . . .	36
Error message description (part of errors) . . . . .	37
Reading of alert log . . . . .	38
Changing the display for each log type . . . . .	39
Reading of command history log . . . . .	40
Description of the command and data . . . . .	40
Format of the command data . . . . .	41
Updating . . . . .	41
PJ Master software updating. . . . .	41
Network Board firmware updating. . . . .	42
Projector firmware updating. . . . .	43
Version information. . . . .	44

## Chapter 4 Advanced setting . . . . . 45

Customizing the command list. . . . .	46
Define file for projector . . . . .	46
Define file for PDP monitor. . . . .	47
Format of the define file. . . . .	48
Example. . . . .	48
Predefined command list . . . . .	49
Executing commands. . . . .	49
Condition check commands and response. . . . .	50
Create the group information with a text file . . . . .	51
Network tree data format . . . . .	51
Practical example of the defined file . . . . .	51

# 1

## Chapter 1 Introduction

---

## Overview

The PJ Master is a software to manage and control targets (Projectors and PDP monitors) in a network centrally, and forms a tree structure with the targets and servers. The top server manages operating condition of the targets centrally and provides functions to control targets and update the software remotely. The PJ Master operates in cooperation with database software, registers all the information in the database, and displays them on the status window.

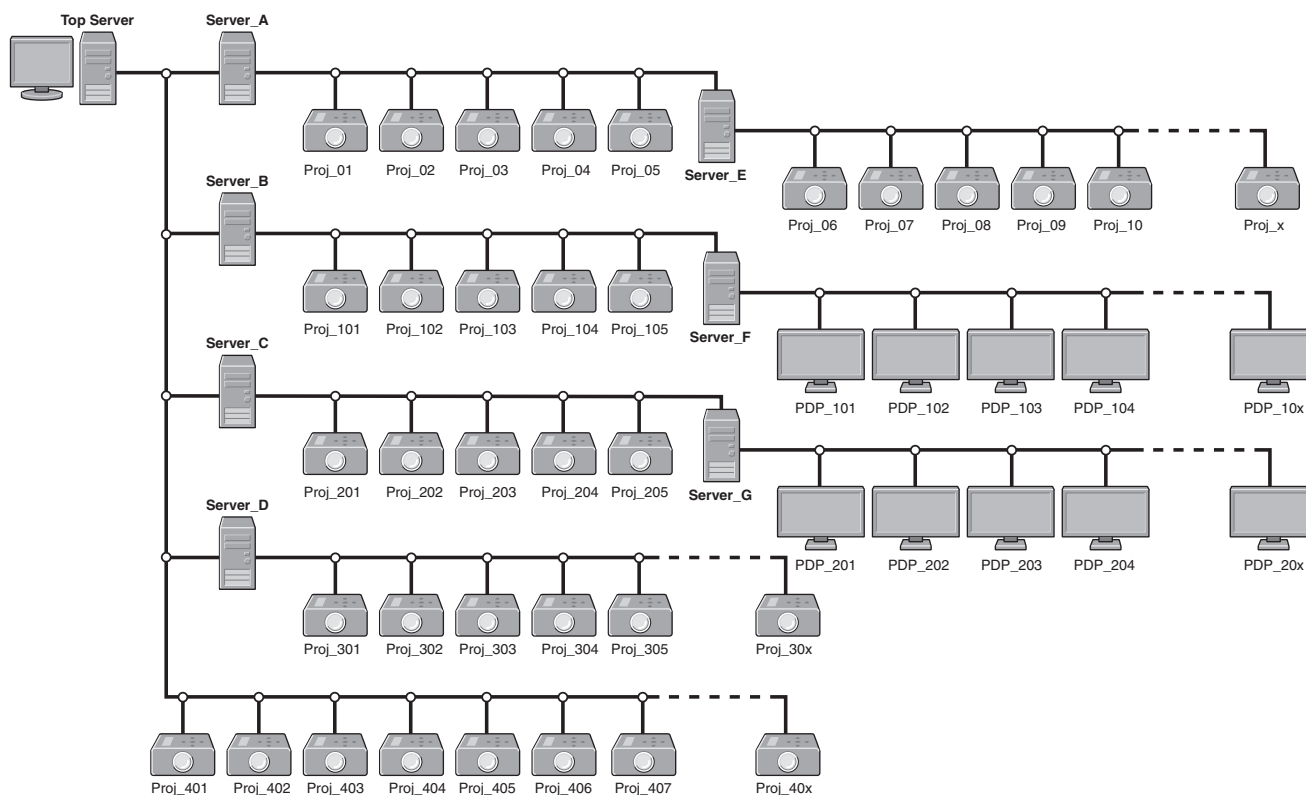
## Features

- Managing the operation condition of targets centrally.
- Central controlling the targets by serial command transferring via the network.
- Updating the firmware of the projectors \*.
- Updating the program of the PJ Master on the servers.
- Updating the firmware of Network Board on the targets.

\* Only the model which supports the firmware updating via the network.

## System chart

Following example shows a system configuration chart using with the PJ Master. All the projectors and PDP monitors are controlled and monitored by the top server.



## Operating environment

### System requirement

Server: Windows XP Professional, Windows 2000 Professional

Database: Microsoft SQL Server 2000 Desktop Engine (MSDE 2000) Release A

### Hardware requirement

CPU: Intel Pentium III 400MHz or more

RAM: 128MB or more (Windows XP), 64MB or more (Windows 2000)

Display: XGA or more resolution and 256 colors

Hard disk: More than 100MB of free space for software installation, and another minimum 100MB of free space to store the logs depending on your environment for usual operation

Drive: CD-ROM

Network: 10Base-T or more

### Others

Protocol: TCP/IP and unique specification

Port use: 5871: for upper server, 5872: for lower server, 5873 and 5874: Reserved  
10000 for telnet port

### Limitation

Maximum connectable equipment in a network: Server:

1000 sets, Target: 15,000 sets, and 100 sets maximum/a node.

The PJ Master supports the projector or PDP monitor provided with the Network Board listed below;

POA-PN01, POA-PN01A, POA-PN02, POA-PN03, POA-PN10,  
POA-PN30,  
POA-PN40,  
POA-MD13NET, POA-MD13NET2, POA-MD19NET  
KA-PN03

\* It is required you must have an administrator rights to the server for software installation.





# 2

## Chapter 2 Setup

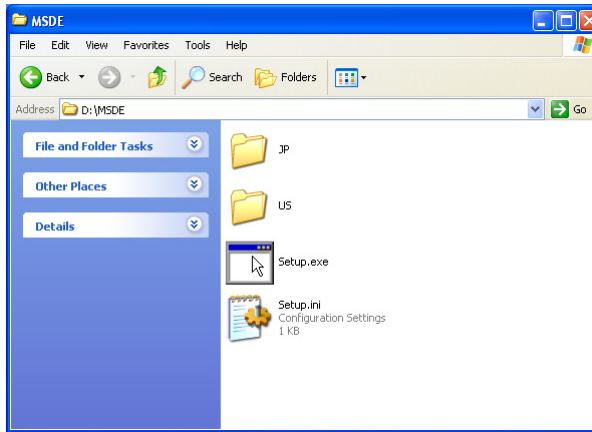
---

## Software installation

The PJ Master consists of the database software “Microsoft SQL Server Desktop Engine 2000A” and administrative tool “PJ Master” provided with graphic user interface. You need to install the above software on a top server and sub servers following to the steps below.

### Microsoft SQL Sever Desktop Engine 2000A installation

1. Double-click the **Setup.exe** icon in a folder “MSDE” in the CD-ROM.



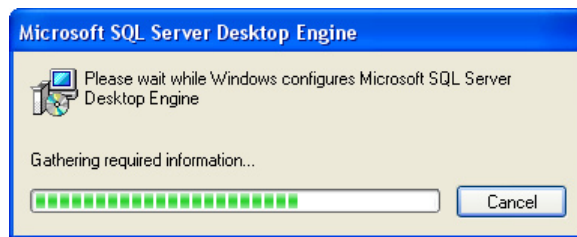
2. The language selection dialog window appears. Select the language you wish to use and click **OK**.



3. The password entry window appears. Type password\* and click **Install** to start installation.



4. The dialog window appears to show you the installation status and remaining time.



After completing the installation, the dialog disappears.

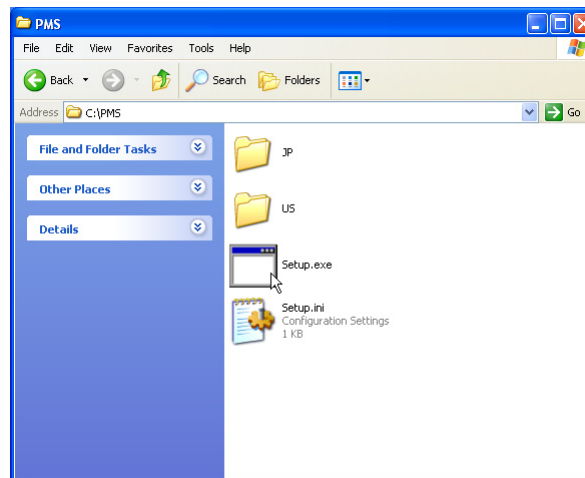
5. Restart your computer:

6. After restarting your computer, check the MSDE Service Manager icon appears on the task bar:



## PJ Master installation

1. Double-click the **Setup.exe** icon in a folder "PMS" in the CD-ROM.

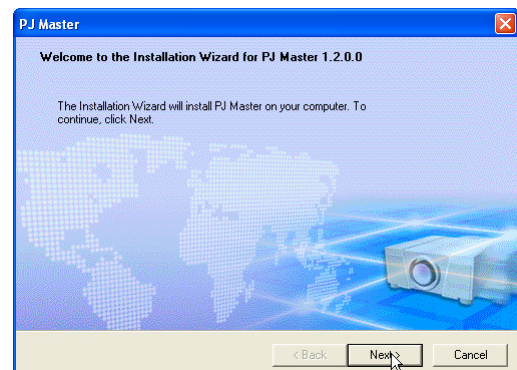


2. The language selection dialog window appears.

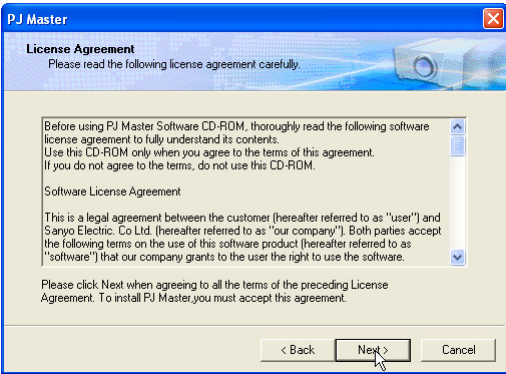
Select the language you wish to use and click

**OK**. The installation wizard window appears.

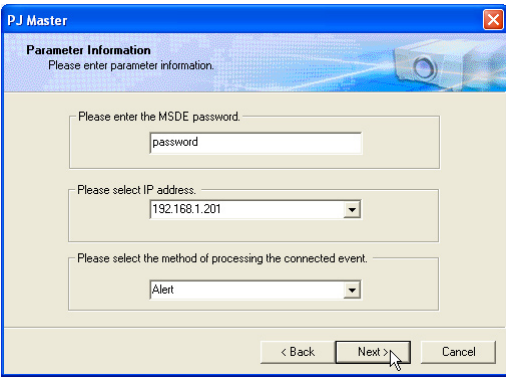
Click **Next** to start installation.



3. Software License Agreement window appears. Thoroughly read the contents. If you agree to the contents of the software license agreement, click **Next**.

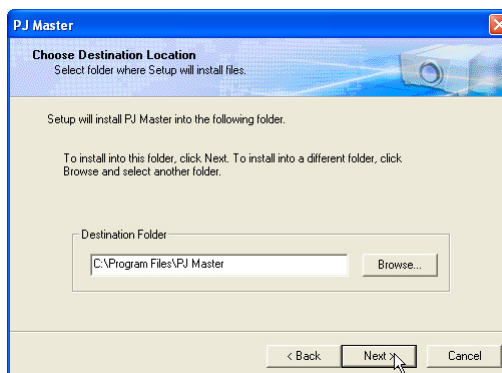


4. Parameter window appears. Set parameters as below and click **Next**.

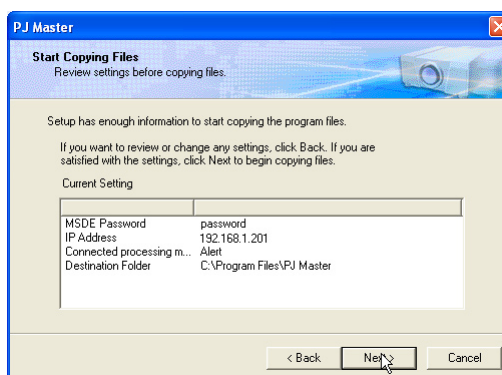


Item	Description
MSDE Password	Enter the same password when used at the installation of the Microsoft SQL Server Desktop Engine (p.10). You cannot install PJ Master software if the password differs.
IP Address	IP address of the computer appears automatically. If your computer provide the multiple network cards, select an IP address which you want to use for the PJ Master. * If "127.0.0.1" appears, your computer is not connected to the network correctly. Make sure that the LAN cable is connected to the computer and try installation again.
Connected event	Select "Alert" or "Status".
Alert	Displays the event as Alert when the target is disconnected from the network.
Status	Displays the event as Status when the target is disconnected from the network. * See item "Reading of alert log" (p.38) for further information.

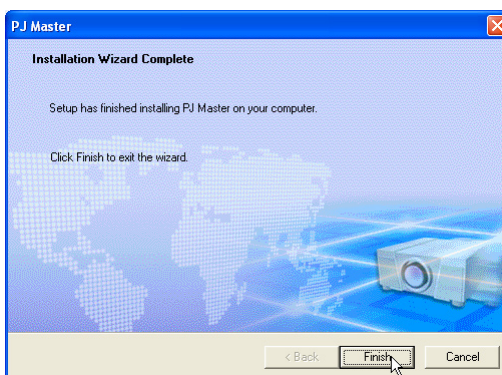
5. Choose Destination Location window appears. Select the location and click **Next**.



6. Installation Information window appears. Confirm all the installation information and click **Next** to start the installation.



7. When completing the installation, click **Finish** to close the installation window.



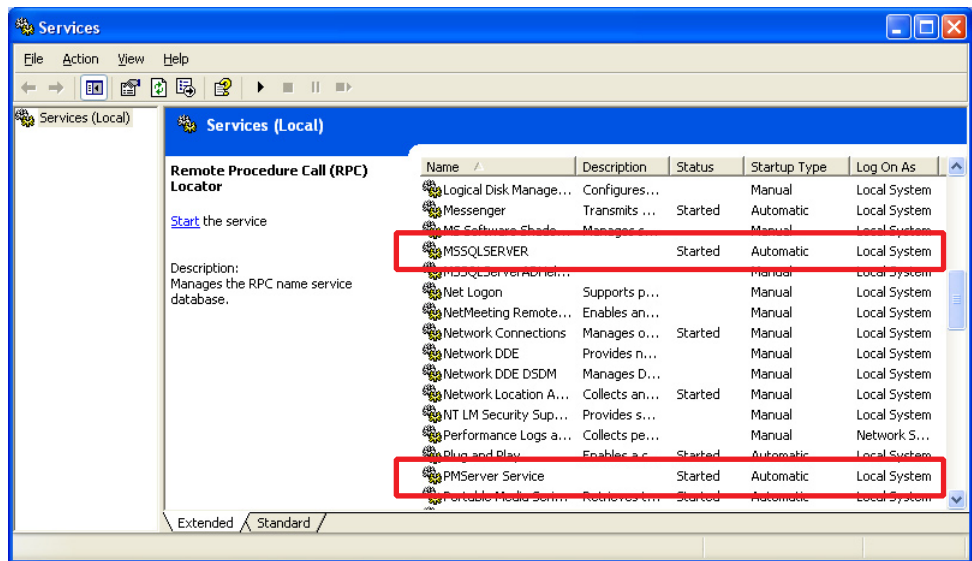
**This is complete for the installation of software.**

If you want to use PJ Master on the multiple servers, install software "Microsoft SQL Server Desktop Engine 2000A" and "PJ Master" into each server following to the above procedure. It is also required to have the license of PJ Master for each server:

## Service starting confirmation

1. Open **Control Panel**, double click **Administrative Tools** icon and then double click **Service** icon.  
The service control window will appear.
2. Confirm the following services are started as follows;

Name	Status	Startup Type	Log On AS
MSSQLSERVER	Started	Automatic	LocalSystem
PMServer Service	Started	Automatic	LocalSystem



## Uninstallation

Take following steps to uninstall the software.

1. To remove Microsoft SQL Server Desktop Engine, perform it with "Add/Remove Programs" on the control panel.
2. To remove the PJ Master, Select "Unisntallation" from the "Start" - "All Program" - "PJ Master".

# 3

## Chapter 3 Basic operation

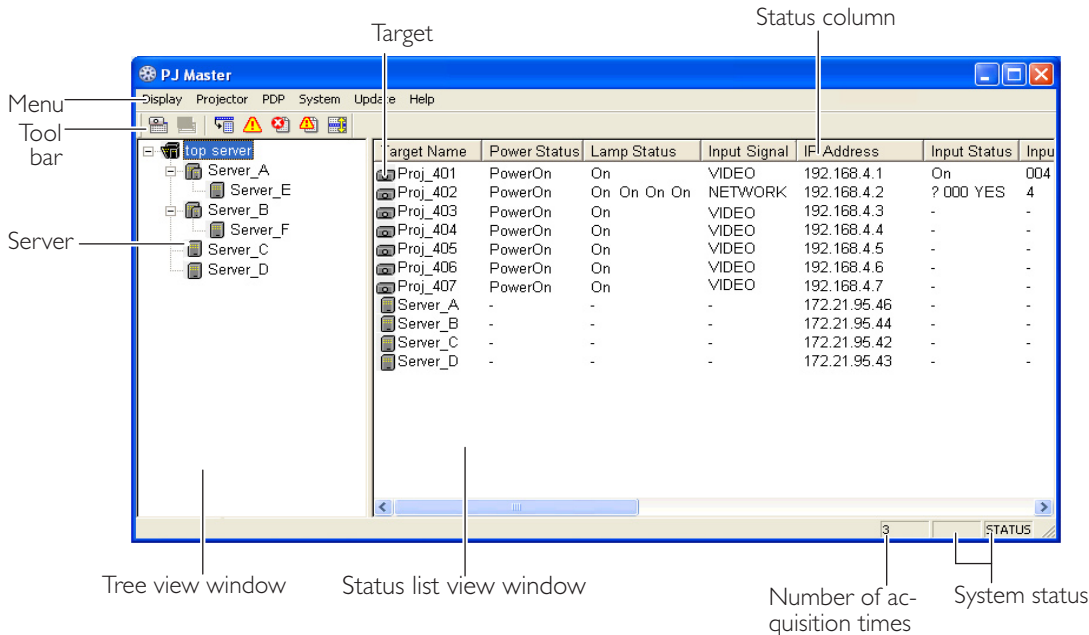
---

## Launching PJ Master

To launch the PJ Master, select “PJ Master” from “Start” - “All Programs” - “PJ Master”. The status window will appear on the screen.

Make sure that the server is connected to the network and assigned a correct IP address before launching the PJ Master. If the PJ Master cannot acquire the IP address, the IP Address setting dialog will appear on the screen (p. 27).

## Name of status window



\* The web-based setting page will appear on the screen when double clicking the target.

Name	Description
Tree view window	Displays tree structure of the target servers
Status list view window	Displays the status of the servers and targets which are linked to the server selected on the tree view window
Status column	Column of the status. This can be customized (p.28).
Number of acquisition times	Displays the number of acquisition times after the PJ Master starts
System status	Displays ERROR, ALERT or STATUS according to the last acquisition status

## Quitting PJ Master

To quit the PJ Master, click the close button on top right of the window, or select **Exit** from **Display** menu.

\* This executes only window close. The monitoring still operates as background process.



## Operation

When selecting a server on the tree view window, the linked targets or servers under the selected server are listed on the status list view window. Their status information are acquired from the database in the top server and displayed on the status list view window.

After spending the predefined interval time\* or executing **Refresh** command, the latest status information in the database in the selected server is displayed on the status list view window.

\* See item "System Setting" for interval time (p.25).

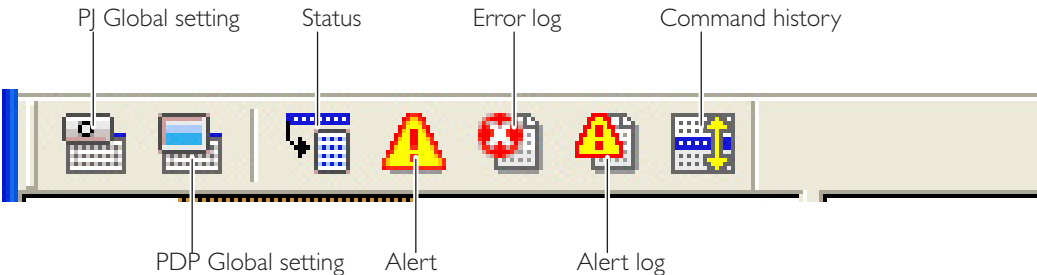
## Menu tree

Menu	Sub menu	Operation
Display	Status...	Displays selected target status on the status window (p.35)
	Alert...	Lists existing alert events on the alert window (p.36)
	Alert Export...	Exports existing alert information as text file (csv file)
	Log - Error...	Lists error events on the error log window (p.36)
	Alert...	Lists alert events on the alert log window (p.38)
	Command History...	Lists command history on the history log window (p.40)
	Refresh	Updates window information. When this command is executed, the PJ Master acquires target information from the database and displays them on the status window. The PJ Master does not access the target or server directly to get the status, so it may differ between the status displayed on the window and the actual status of the target.
	Tool bar...	Switches tool bar display on or off (p.18)
	Exit	Quits the PJ Master
Projector	Warning Setting...*	Sets warning value of use time and temperature (p.30)
	Global Setting...*	Displays projector global setting window (p.31)
PDP	Global Setting...*	Displays PDP global setting window (p.31)
System	Group Edit...*	Registers servers and targets with tree construction (p.19)
	Group Export...*	Exports the tree information of the servers and targets as the csv file (p.24)
	Interval Time Setting...	Sets interval time to update the status list view window (p.25)
	Temperature Selection...	Selects temperature unit Celsius or Fahrenheit (p.25)
	Warning Reception Setting...	Sets warning reception type "Sound" and/or "Window" (p.26)
	Encryption Setting...*	Sets encryption communication on or off (p.27)
	Column Selection...	Selects display columns on the status list view window (p.28)
	Font Setting...	Sets font on the status list view window (p.29)
	IP Address Setting...	Selects an IP address manually (p.27)
Update	PJ Master Update...*	Used to update software PJ Master (p.41)
	PJ-Net Update...*	Used to update firmware of the Network Board (p.42)
	PJ Update...*	Used to update firmware of the projector or PDP (p.43)
Help	Version...	Displays the PJ Master version information (p.44)

\* Only available at the top server.

## Name of the buttons on the tool bar

The following commands are assigned to the buttons on the tool bar:



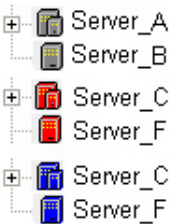
Button	Operation
PJ global setting	Displays projector global setting window. (p.31)
PDP global setting	Displays PDP global setting window. (p.31)
Status	Displays selected target status on the status window (p.35)
Alert	Lists existing alert events on the alert window (p.36)
Error log	Lists error events on the error log window (p.36)
Alert log	Lists alert events on the alert log window (p.38)
Command history	Lists command history on the history log window (p.40)

\* To switch tool bar display on or off, select **Tool bar** from **Display** menu.

## Execution of the commands

The PJ Master provides some kinds of ways to execute the commands. The PJ Master executes the command assigned to the buttons on the tool bar, or command on the menu, or command on the popup menu appeared by right-clicking with a mouse button.

Server icons



Projector icons



PDP icons



## Status display of icons

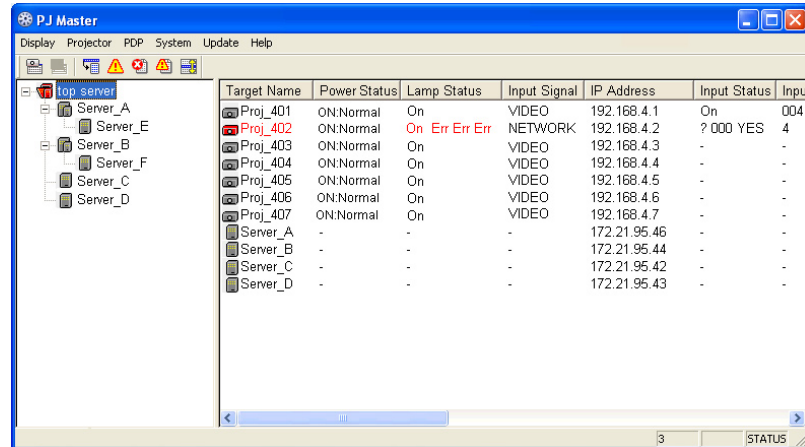
Displays icon according to the target condition or server condition

Icon	Condition
Server	
Gray	Displays the sub server and targets linked to this server operate in normal
Red	Displays the target linked to this server has an alert
Blue	Displays number of the disconnected targets placed under this server exceeds defined disconnect number (p.20)
Target	
Gray	Displays the target operates in normal
Red	Displays the target has an alert.
Blue	Displays number of the disconnected targets placed under the server exceeds defined disconnect number (p.20)

\* Top server icon displays red if one of the servers or targets in the network has an error.

## When the alert occurs on the target or server

If the abnormality or connection error occurs on the target (Projector or PDP monitor), the PJ Master indicates target name and status column item with red to let you know the abnormality, also changes color of icon to red.



If one of the targets has an alert, the icon color of upper server which that target is linked changes to red. Its server brings up the alert information to the another upper server and finally the alert information is brought up to the top server. The icon color of server including the top server on which the alert is detected changes to red. So if the icon color of the top server is red, there may be some alerts on targets in the network.

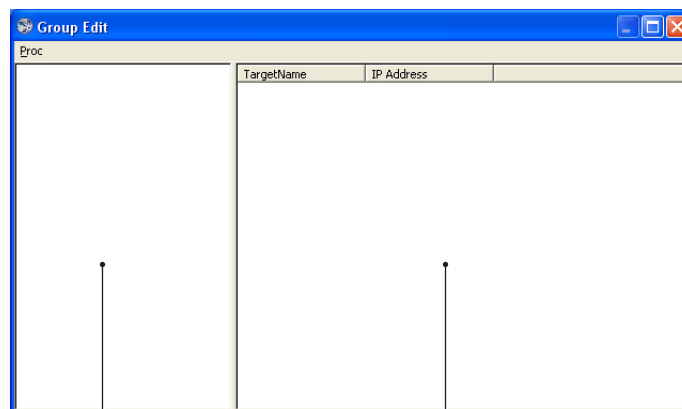
\* To judge the condition of the target "Alert" or "Status" when the connection error occurs, it is according to your selection of the connection event during the installation. (p.12)

## Creating the group information

### Adding the server and target

To add the server and target on the status window, first select **Group Edit** from **System** menu. The group edit window appears as follows.

When adding, editing or deleting the server or target, perform it on this group edit window.

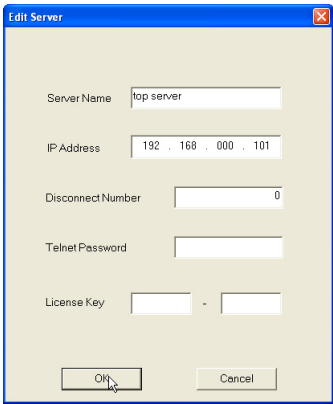


Server edit window

Target edit window

### Adding the top server

- 1. Right-click on the server edit window and select **Add** on the popup menu.The new server registering window appears.
- 2. Enter the topserver information.



Item	Description
Server name	Name of the top server
IP Address	Enter IP address assigned to the top server
Disconnect Number* <sup>1</sup>	0
Telnet Password* <sup>2</sup>	Password for telnet connection to the target. Should be set the same login password to the target.
License Key* <sup>3</sup>	Enter the product license key affixed on the Quick Setu Guide.

3. Click **OK** to set the information.The setting window will close.

\*<sup>1</sup> Disconnect Number is to specify the maximum number of the disconnected servers and targets managed by the upper server. If the upper server detects disconnected targets more than this value, the server judges that they are not ready to be controlled and leaves them from target monitoring. The icon color of the server is changed to blue to show you the status.

\*<sup>2</sup> Unified login password to the targets placed into the same group should be used.

\*<sup>3</sup> The PJ Master enable you to register a top server and up to 3 targets without license key for the test purpose.

### Adding the sub server

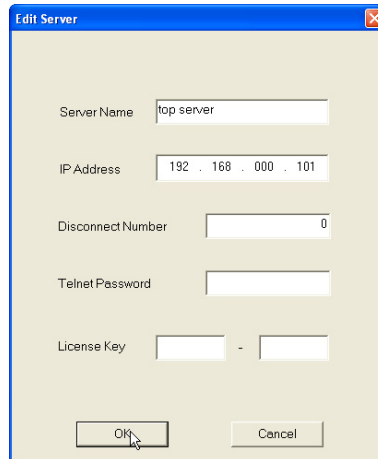
- 1. Right-click on a top server on the server edit window and select **Add** on the popup menu.The new server registering window appears.
- 2. Enter the sub server information as the above of "Adding the top server".
- 3. Click **OK** to set the information.The setting window will close.The server is registered under the selected top server or sub server.
- 4. Repeat steps 1 to 3 to register the servers.

Important notice on license key entry

The license key is affixed on the Quick Setup Guide supplied with the CD-ROM. Each PJ Master on the servers is required to register each license key. The entry of license key for the sub servers must be carried out through the PJ Master on the top server otherwise the sub servers cannot join the top server group.

## Editing the server information

1. Select the server you intend to edit server information. Right-click on it and then select **Edit** on the popup menu. The edit server window appears.



The 'Edit Server' dialog box contains the following fields and controls:

- Server Name:** A text box containing 'top server'.
- IP Address:** A text box containing '192 . 168 . 000 . 101'.
- Disconnect Number:** A text box containing '0'.
- Telnet Password:** An empty text box.
- License Key:** Two text boxes separated by a hyphen, both empty.
- Buttons:** 'OK' and 'Cancel' buttons at the bottom.

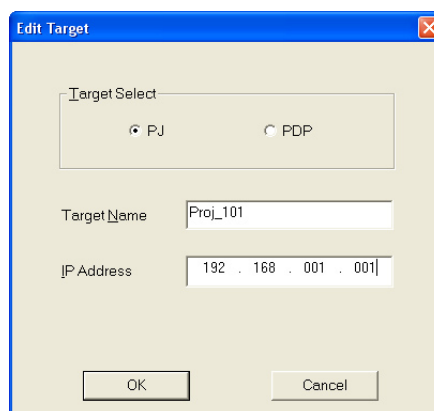
2. Edit server information on the window.
3. Click **OK** to set the information. The edit window will close.

## Deleting the server

1. Select the server you intend to delete. Right-click on it and then select **Delete** on the popup menu.
2. Click **Yes** on the confirmation dialog.

## Adding the target

1. Select the top server or sub server under which you intend to place the target. If the target is registered under the selected server, the target icon will appear on the target edit window.
2. Right-click on the target edit window and select **Add** on the popup menu. The target registering window appears.



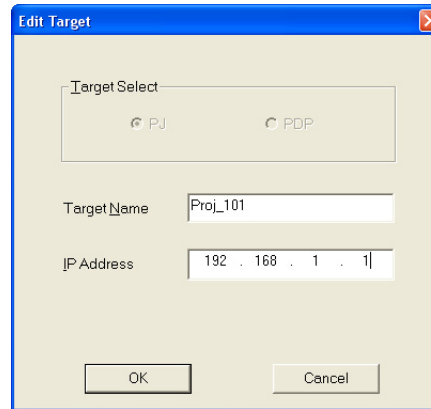
The 'Edit Target' dialog box contains the following fields and controls:

- Target Select:** A group box containing two radio buttons: 'PJ' (selected) and 'PDP'.
- Target Name:** A text box containing 'Proj\_101'.
- IP Address:** A text box containing '192 . 168 . 001 . 001'.
- Buttons:** 'OK' and 'Cancel' buttons at the bottom.

3. Select target either PJ or PDP, and enter target name and IP address.
4. Click **OK** to set the information. The setting window will close. The registered target will be listed on the target edit window.

## Editing the target information

1. Right-click on the target and then select **Edit** on the popup menu. The edit target window appears.



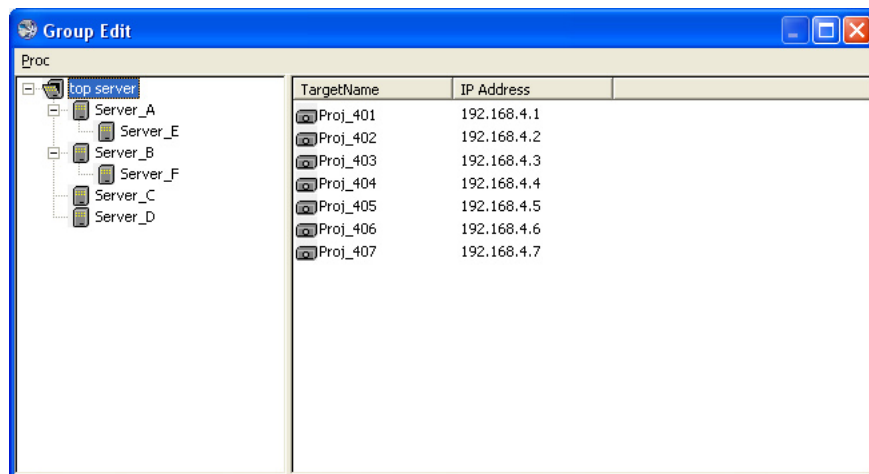
2. Edit target name or IP address on the edit target window. The target type PJ or PDP cannot be changed.  
3. Click **OK** to set the information. The edit window will close.

## Deleting the target

1. Select the target you intend to delete. Right-click on it and then select **Delete** on the popup menu.  
2. Click **Yes** on the confirmation dialog.

## Reflecting the group information

1. After completing registering the group information, select **Execute** from **Proc** menu to reflect the group information into a master database in the top server.



2. Click **Yes** on the confirmation dialog.

\* When the tree information is restructured, the PJ Master discards the untreated commands.

\* When the IP address registered as the top server differs from the IP address assigned to the server provides the PJ Master, the group information cannot be reflected onto the status window of the PJ Master.

## Canceling the group information

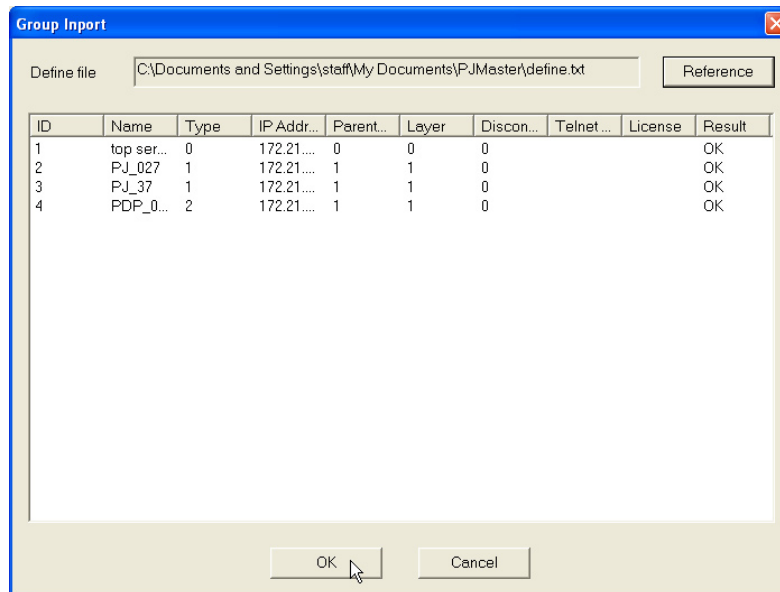
To cancel the group information, select **Exit** from **Proc** menu.

## Import the group information from the defined file

If you have a defined file which is exported by using **Group Export** command (p.24) or written manually referring to item "Create the group information with a text file" (p.51), use this command to import the group information into the master database on the top server.

1. Select **Group Import** from **Proc** menu. The group import window will appear.
2. Click **Reference**. The file selection window will appear and select a defined file which provides the group information of the servers and targets, and then click **Open**. The defined tree information will be listed on the group import window.

\* If there is an error in the imported group information, the error item is indicated with red and the error comment is indicated on the "Result" column on the group import window. In this case, clear up all the errors in the defined file and import it again.



3. Check the information and click **OK**. The servers and targets will appear on the group edit window.
4. Select **Execute** from **Proc** menu to reflect the group information into a master database in the top server:
  - \* The confirmation dialog "Are all the mastering logs initialized? [Yes/No]" will appear: Click **Yes** when initializing the all the logs in the master database. We recommend that all the logs in the master database should be initialized when importing the group information from the text file.
5. Click **Yes** on the confirmation dialog.

### About error

- \* If other than the numerical number is used for the ID, Type, Parent ID, Layer, or Disconnect Number column, "\*" is displayed on that column as the error.
- \* If there are multiple errors on the target or server information, only the single error information is displayed. After resolving that error and import it again, the next error information is displayed. The order of the error display is according to the column order.

## Export the group information

The PJ Master allows you to export the group information in the top server as the text file. Click **Group Export** from **System** menu, and select a destination to save the file. This text file contains the information as table below. It is recommended that after creating the group information with **Group Edit** command, export the latest group information for the backup.

For further information of the column, see item “Create the group informatin with a text file” (p.51).

Column	Description (example)
ID code	Sequence number (1,2,3,4.....)
Target name	Server name or Target Name (Server_A, Server_B, Proj_01, Proj_02, PDP_10)
Target property	0: Server, 1: Projector, 2: PDP (0,1,2)
IP Address	Assigned IP address (192.168.0.1,)
Parent ID code	ID of the server to which the target links. The top server should be set “0”
Layer	0: top layer; 1: 2nd layer; 2: 3rd layer,...(0,1,2,3..)
Disconnect number	Number of disconnected targets (1,2,3,4,5...)
Telnet password	Password for telnet login to the target (blank: no password)
Licens key	License key code for the PJ Master
Updated Date	(2005-05-28 12:15:00)

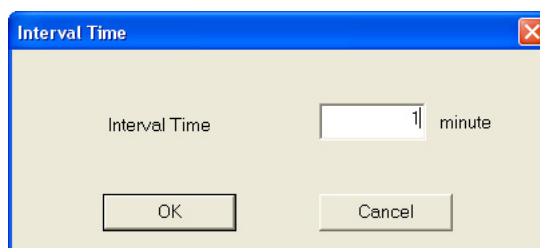


## System setting

### Interval time setting

Setting the interval time to update the information on the status list view window.

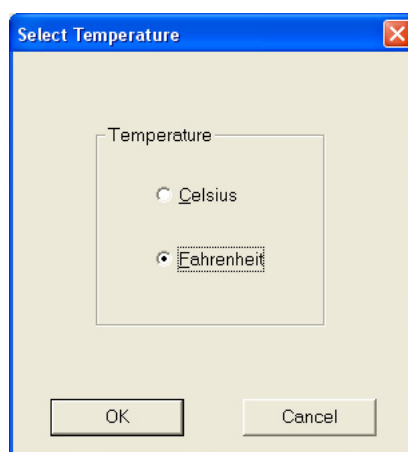
1. Select **Interval Time Setting** from **System** menu. The setting window will appear.
2. Enter interval time. 1 to 9999 minutes can be used.
3. Click **OK** to set the time.



### Temperature selection

Setting temperature unit Celsius or Fahrenheit

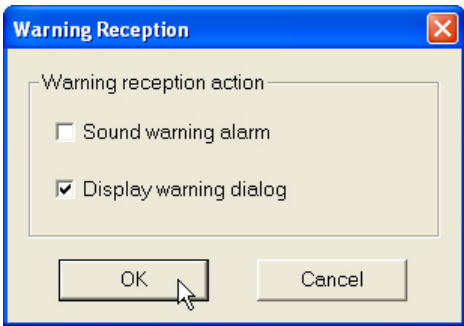
1. Select **Temperature Selection** from **System** menu. The setting window will appear.
2. Select either "Celsius" or "Fahrenheit" with radio button.
3. Click **OK** to set the unit.



## Warning reception setting

Setting warning reception action type when the warning occurs.

1. Select **Warning Reception Setting** from **System** menu. The setting window will appear.
2. Tick the action type "Sound warning alarm" and/or "Display warning dialog".

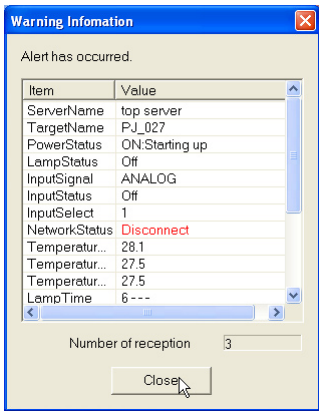


Item	Description
Sound warning alarm	Warning alarm sounds when the warning occurs
Display warning dialog	Warning dialog window appears when the warning occurs

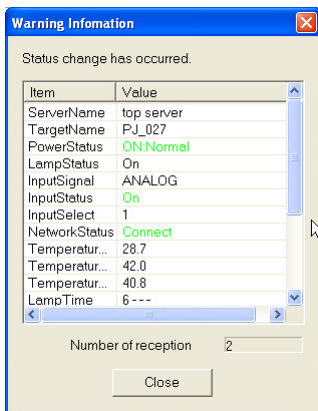
3. Click **OK** to set.

## When the warning occurs

If the status change, alert or error occurs and the item "Display warning dialog" is ticked at the warning reception setting, the following warning information window appears on the screen.



Alert dialog window



Status Change dialog window

\* The value indicated with red shows the alert has occur. The value indicated with blue shows the alert has been resolved.

\* Warning value is indicated with green.

Item	Description
Number of reception	Number of reception times after the warning dialog appears

## Encryption setting

Setting Encryption on or off for the communication between servers.

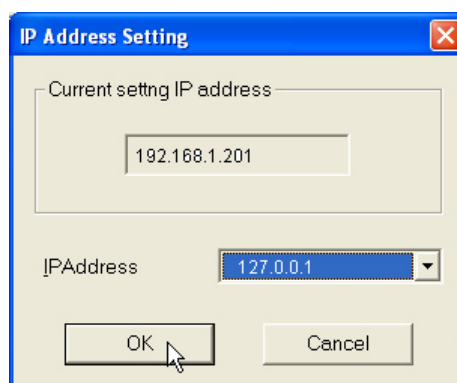
1. Select **Encryption Setting** from **System** menu. The setting window will appear.
2. Select either "On" or "Off" with radio button.
3. Click **OK** to set the encryption.



## IP Address setting

When the server provides multiple network cards and you want to change the IP address for the PJ Master; or the PJ Master cannot acquire the IP address assigned to the server; use this command to change or acquire the IP address manually.

1. Select **IP Address Setting** from **System** menu. The setting window will appear.
2. Select an IP Address you want to set with the pull-down menu button. and click **OK** button.

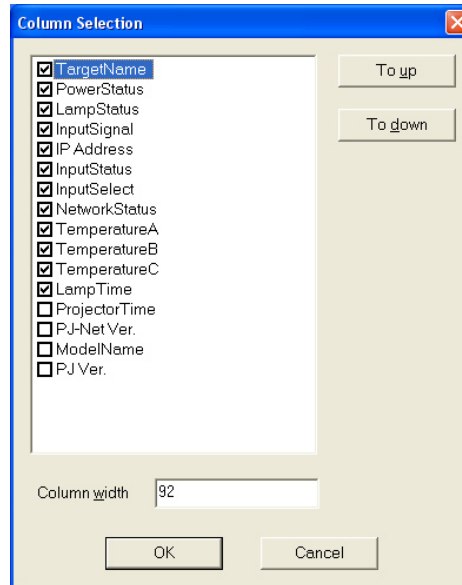


- \* The multiple IP addresses are listed on the pull-down menu button if the server provides multiple network cards.
- \* If "127.0.0.1" appear on the pull-down button, the server may not connect to the network correctly. Make sure that the network cable is connected to the server correctly and the IP address is assigned to the server; and then restart the PJ Master.

## Customizing the display columns

### Changing the status column indication

1. Select **Column Selection** from **System** menu. The setting window will appear.
2. On the window, check the column name you want to display on the status list view window.



Column	Description
Target Name	Name of the network equipment
Power Status	Status of the network equipment (ON:Normal, OFF:Normal, OFF:P-Mng, Cooling, CountDown, etc.)
Lamp Status	Status of lamp (On, Off, Err, LampNonLight, etc. indicated with lamp1, lamp2, lamp3, lamp4 sequentially)
Input Signal	Name of input signal (Analog, Digital, S-Video, Video, Y/Cr/Cb, Y/Pr/Pb, etc.)
Input Status	Status of input signal (On, Off, Interrupted)
Input Select	Displays input mode (1,2,3 etc)
Network Status	Status of network connection (Disconnect, Connect)
Temperature A	Displays inside temperature A of the equipment (in Celsius or Fahrenheit)
Temperature B	Displays inside temperature B of the equipment (in Celsius or Fahrenheit)
Temperature C	Displays inside temperature C of the equipment (in Celsius or Fahrenheit)
Lamp Time	Displays lamp use time (Indicated with lamp1, lamp2, lamp3, lamp4 sequentially)
IP Address	Displays IP address of the equipment
Model Name	Displays model name of the equipment
Projector Time	Displays accumulated projector use time
PJ-Net Ver.	Displays the version of the PJ Master or Network Board firmware
PJ Ver.	Displays the version of the projector firmware

3. To change order of the display column on the status list, select column you intend to change order and click **To up** or **To down**.
4. Click **OK** to set the display column. The setting window will close.

\* When specifying the column width by numeric value, enter number (0 to 9999) onto "Column width" text box.

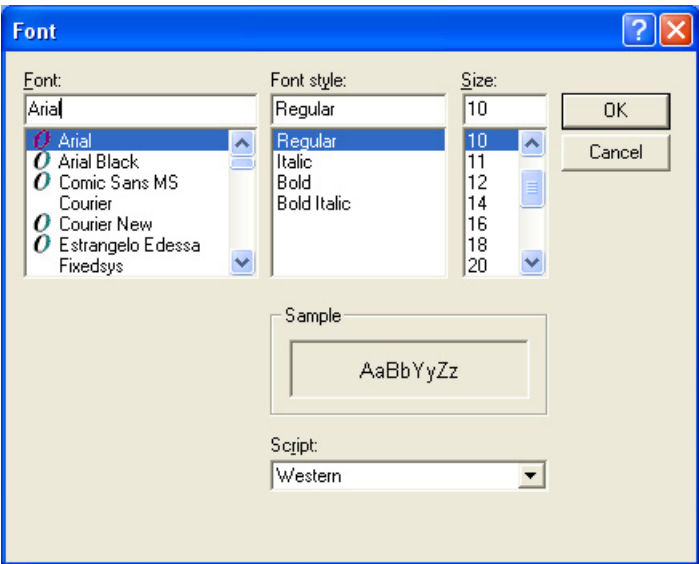
\* When changing the column width or column order on the status list view window, it is reflected to the column selection window.

\* Some of the column items may not effective depending on the connected target.

## Font setting

### Changing fonts on the status list

1. Select **Font Setting** from **System** menu. The setting window will appear.

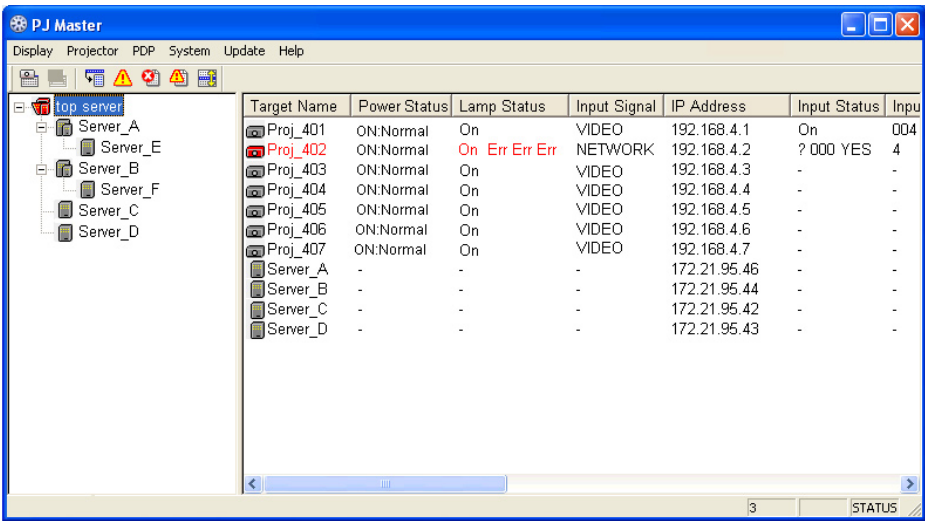


- 2. Select your desired font face, style and size on the window.
- 3. Click **OK** to close window.

## Warning value setting

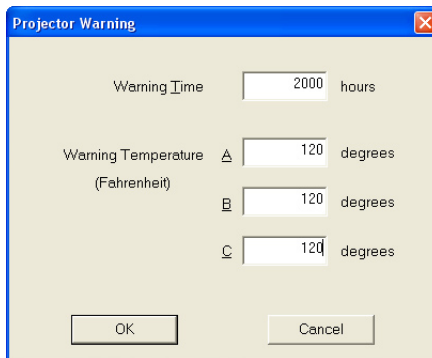
The threshold value of lamp use time and internal temperatures of the target are set up with this procedure. When it reaches a setting time or temperature, the alert will be displayed on the status list view window.

\* This setting is only effective for the projector.



## Warning time/temperature setting

1. Select a target on the status list view window or a server on the tree view window.
  - When setting the multiple targets together; select targets and/or servers on the status list view window with pressing "Shift" or "Control" key.
  - If you select the server on the tree view or status list view window, the setting will be effected to the targets linked under the selected server.
2. Select **Warning Setting** from **Projector** menu. The setting window will appear. The current setting value of the selected target will be displayed on the window. When selecting the multiple target, it displays the last setting value.



3. Enter the threshold value of warning time, or internal temperatures A, B or C of the target.
4. Click **OK** to set the warning setting. The setting window will close.

\* 0 to 99999 hours can be set for warning time, and 0 to 99.9 degrees in Celsius or 32.0 to 211.9 degrees in Fahrenheit can be set for warning temperature.

\* The default values are as follows;

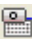

Warning Time: 99999 hours

Warning Temperature: 99.9 degrees in Celsius or 211.9 degrees in Fahrenheit

## Global setting

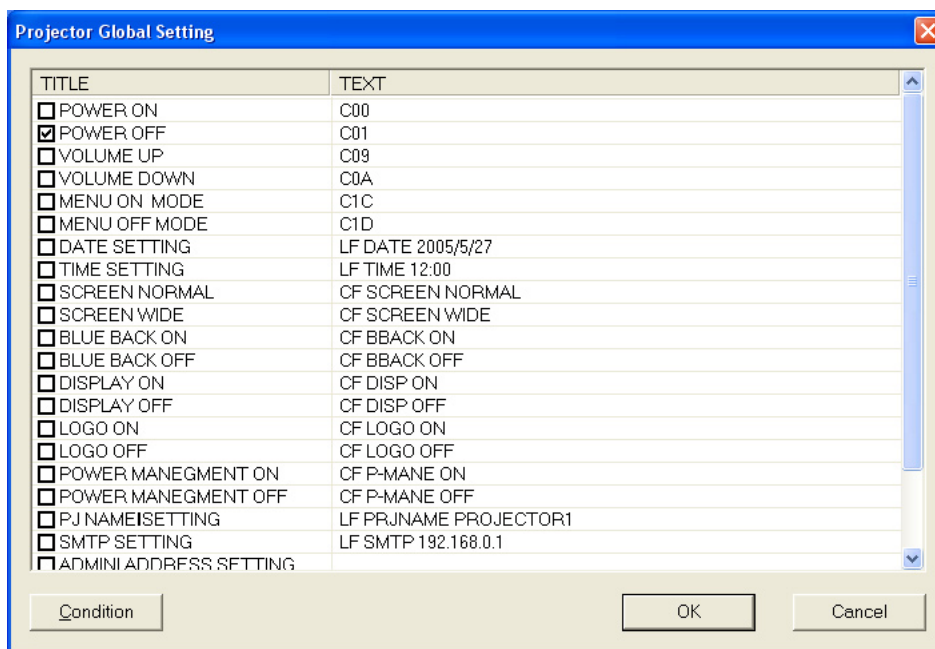
The PJ Master controls target by sending the specified control command via the network. The PJ Master provides 24 kinds of basic commands for projector and 6 kinds of basic commands for PDP monitor initially. You can also edit their commands or add new commands easily according to your projector, PDP monitor or usage.

### Sending a command

- Select a target on the status list view window or a server on the tree view window.
  - When setting the multiple targets together, select targets and/or servers on the status list view window with pressing "Shift" or "Control" key.
  - If you select the server on the tree view or status list view window, the setting will be effected to the targets linked under the selected server.
- Click  or  button on the tool bar or select **Global Setting** from **Projector** or **PDP** menu.
 

The setting window will appear:

  - The commands which are not effective to the selection are disabled.



- Tick check boxes next to the title name and then click **OK** to execute the command. The setting window closes.
- After that the targets will operate according to the sending commands.

\* If there are some errors on the targets or servers, the PJ Master receives error information from the servers or targets and indicates further details on the error log window. See item "Reading of error log" for further information. (p.36)

**Default commands for projector**

<b>TITLE</b>	<b>TEXT</b>
POWER ON	C00
POWER OFF	C0I
VOLUME UP	C09
VOLUME DOWN	C0A
MENU ON MODE	CIC
MENU OFF MODE	CID
DATE SETTING	LF DATE yyyy/mm/dd
TIME SETTING	LF TIME hh:mm
SCREEN NORMAL	CF SCREEN NORMAL
SCREEN WIDE	CF SCREEN WIDE
BLUE BACK ON	CF BBACK ON
BLUE BACK OFF	CF BBACK OFF
DISPLAY ON	CF DISP ON
DISPLAY OFF	CF DISP OFF
LOGO ON	CF LOGO ON
LOGO OFF	CF LOGO OFF
POWER MANAGEMENT ON	CF P-MANE ON
POWER MANAGEMENT OFF	CF P-MANE OFF
PJ NAME SETTING	LF PRJNAME PROJECTOR I
SMTP SETTING	LF SMTP 192.168.0.1
ADMINI ADDRESS SETTING	LF ADMIN admini@your company name
MAILI ADDRESS SETTING	LF MAILI user@your company name
FANSPEED MAX	CF FANSPEED MAX
FANSPPED NORMAL	CF FANSPEED NOR

**Default commands for PDP monitor**



<b>TITLE</b>	<b>TEXT</b>
POWER ON	C00
POWER OFF	C0I
VOLUME UP	C09
VOLUME DOWN	C0A
MENU ON MODE	CIC
MENU OFF MODE	CID

\* You can define new commands, see item "Customizing the command list" on chapter 4. (p.46)



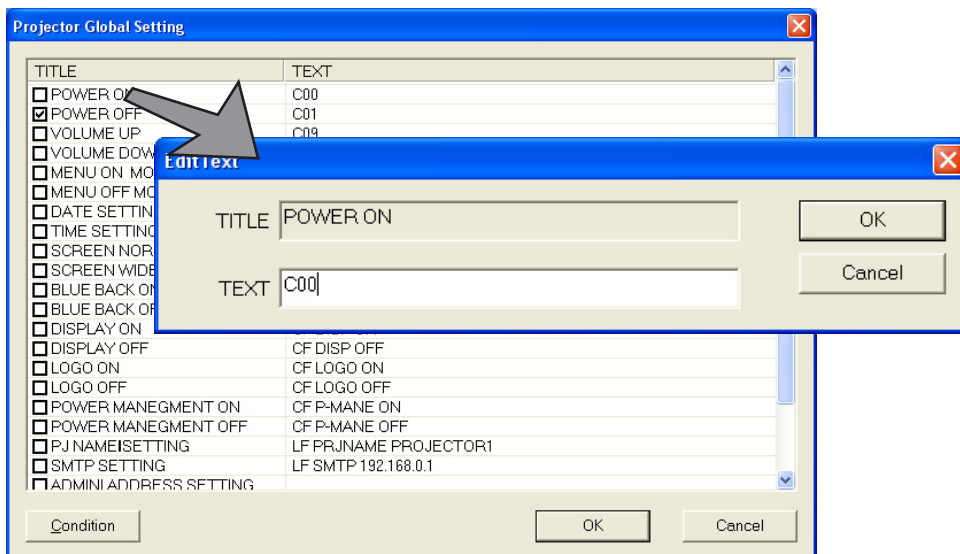
## Editing the predefined command

When changing the command according to the target or resetting date or time to the targets, take the following steps;

1. Select a target on the status list view window or a server on the tree view window.
2. Click  or  button on the tool bar or select **Global Setting** from **Projector** or **PDP** menu.

The setting window will appear.

- The commands which are not effective to the selection are disabled.



3. Double click on a command title name you intend to change. The editing window will appear.
4. Change command on the text box and click **OK** to assign the command.
5. Tick check box next to its title name and click **OK** to execute the command. The setting window will close. The edited command is set as the default command.

\* The command data are stored in the defined files, Define\_PJ.def for projector or Define\_PDP.def for PDP monitor, in the folder PMS/Program. If you want to add the new command, enable you to edit these defined files. For further information, see "Customizing the command list" on chapter 4 (p.46).

## Condition setting

By using the condition function, when executing the command defined by the Global Setting, it is possible to set as its command is executed after checking the target status.



For example: Set screen mode to "Wide" for model "PLC-XP50" only.

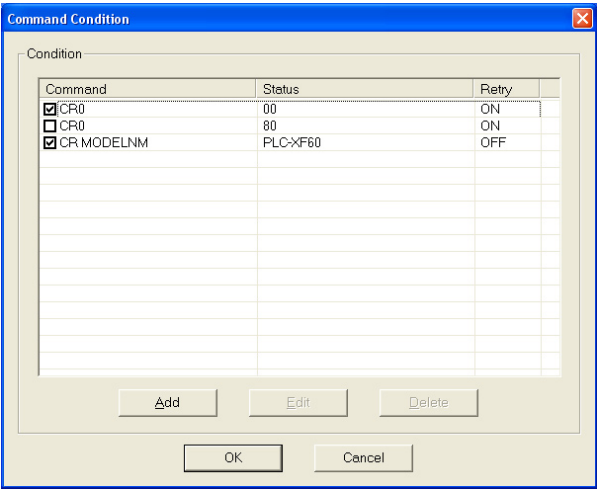
At first, check if the model name of the targets is "PLC-XP50", and then check if the target is in the power-on mode, after that execute the command "Screen Wide".

\* Check the power status before executing the screen mode change command as it is not possible to change the screen mode if the projector is in the stand-by mode.

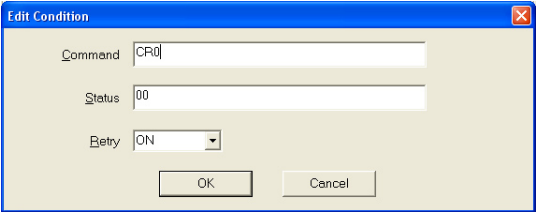
\* The maximum length of the command text including the condition text is 512 characters.

Condition setting example

- 1. Select a target on the status list view window or a server on the tree view window.
- 2. Click  or  button on the tool bar or select **Global Setting** from **Projector** or **PDP** menu.  
The setting window will appear:  
-The commands which are not effective to the selection are disabled.
- 3. Click **Condition** to open the condition setting window.



- 4. Click **Add** to open another setting window. Enter command and status, and set retry on or off.



Item	Setting example
------	-----------------

Command:	CR MODELNM
Status:	PLC-XP50
Retry:	OFF -- only execute command once.

\* The above condition is to check if the model name of the targets is "PLC-XP50".

- 5. Click **OK** to register a new condition command. The new command list appears in the command condition window.
- 6. Repeat 4 to 5 steps for another commands.

Item	Setting example
------	-----------------

Command:	CR0
Status:	00
Retry:	ON -- execute command "CR0" repeatedly until the status is "00".

\* The above condition is to check if the power status of the targets is "Power-On".

- 7. Tick check box next to the command names you want to use for condition check.
- 8. Click **OK** to set the condition command.

9. Tick check box next to the command name.  
SCREEN WIDE CF SCREEN WIDE

10. Click **OK** to execute the command.


The screen mode of the projectors provided with model name “PLC-XP50” will be changed to “Wide”.

- \* For further details of commands and status, described on item “Predefined command list” on chapter 4 (p.49).
- \* If there are projectors model PLC-XP50 in the network and those projectors are in the stand-by mode at the command executed time, that command will execute when the projector turns on.

## Viewing the status, alert and logs

### Viewing the status of target or server

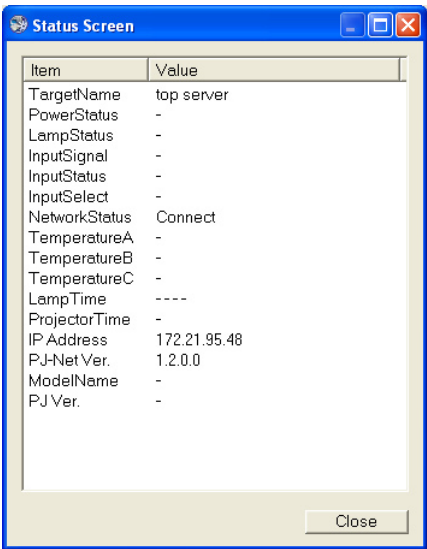
Displays the present status of target or server in the network.

1. Select a target or server you wish to display the status.
2. Select **Status** from **Display** menu or click  button on the tool bar. The status screen window will appear and all the status of the items are displayed. If there is the warning item on the target or server in the network, the warning information is indicated as follows;

Value indicated with red :Alert occurred

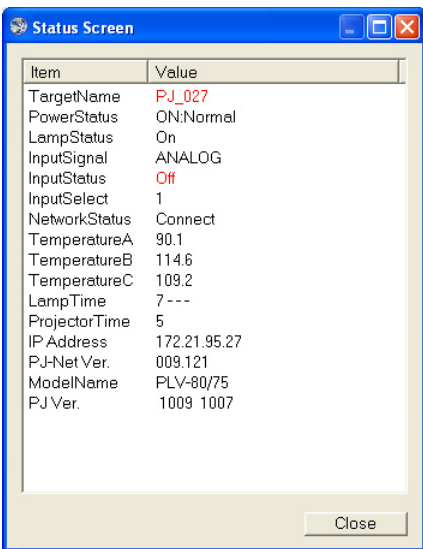
Value indicated with green :Status changed

Value indicated with blue :Alert resolved



Item	Value
TargetName	top server
PowerStatus	-
LampStatus	-
InputSignal	-
InputStatus	-
InputSelect	-
NetworkStatus	Connect
TemperatureA	-
TemperatureB	-
TemperatureC	-
LampTime	----
ProjectorTime	-
IP Address	172.21.95.48
PJ-Net Ver.	1.2.0.0
ModelName	-
PJ Ver.	-

Server status



Item	Value
TargetName	PJ_027
PowerStatus	ON:Normal
LampStatus	On
InputSignal	ANALOG
InputStatus	Off
InputSelect	1
NetworkStatus	Connect
TemperatureA	90.1
TemperatureB	114.6
TemperatureC	109.2
LampTime	7---
ProjectorTime	5
IP Address	172.21.95.27
PJ-Net Ver.	009.121
ModelName	PLV-80/75
PJ Ver.	1009 1007


Target status

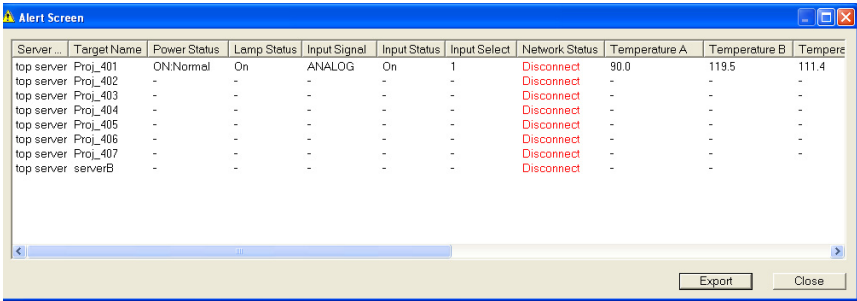
3. Click **Close** to close the window.

- \* The display order of the items on the status screen window is according to the column order of status list view window. To change the order; see item “Customizing the display columns” (p. 28).
- \* The status of the last selected target or server will be displayed when selecting multiple targets or servers.

## Viewing the alert information

Displays the present alert information of the targets or servers in the network.

1. Select **Alert** from **Display** menu or click  button on the tool bar. The alert display window will appear to indicate the alert information. If there is the alert on the target or server in the network, the alert item is indicated with red.



Server...	Target Name	Power Status	Lamp Status	Input Signal	Input Status	Input Select	Network Status	Temperature A	Temperature B	Temper...
top server	Proj_401	ON Normal	On	ANALOG	On	1	Disconnect	90.0	119.5	111.4
top server	Proj_402	-	-	-	-	-	Disconnect	-	-	-
top server	Proj_403	-	-	-	-	-	Disconnect	-	-	-
top server	Proj_404	-	-	-	-	-	Disconnect	-	-	-
top server	Proj_405	-	-	-	-	-	Disconnect	-	-	-
top server	Proj_406	-	-	-	-	-	Disconnect	-	-	-
top server	Proj_407	-	-	-	-	-	Disconnect	-	-	-
top server	serverB	-	-	-	-	-	Disconnect	-	-	-

2. Click **Export** to export the alert information as text file (csv file).
3. Click **Close** to close the window.

\* In the exported csv file, information which alert occurred is indicated with @.

## Viewing the logs

The PJ Master provides 3 types of logs Error log, Alert log and Command history log.


Select each command from menu **Display - Log**. Each log window will appear.

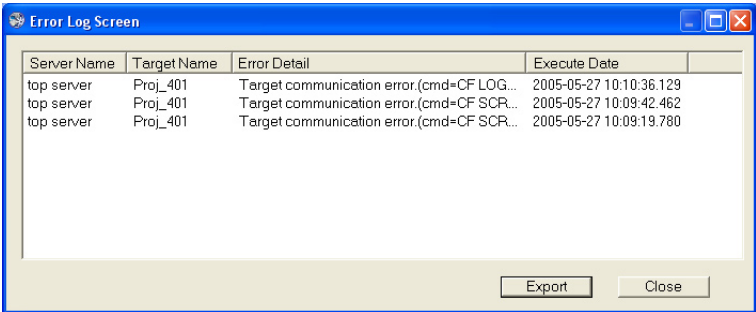
To export the error or alert logs as text file (csv file), click **Export** on its own log window.

\* In the exported csv file, the column items are placed on the 1st row.

### Reading of Error log

Displays the error logs to all the command execution result on the servers.

Select **Error** from **Display - Log** menu or click  button on the tool bar. Before executing the Error Log command, first select a top server, a sub server or a target. The error logs on the selected server or target will be displayed on the error log screen window.



Server Name	Target Name	Error Detail	Execute Date
top server	Proj_401	Target communication error.(cmd=CF LOG...	2005-05-27 10:10:36.129
top server	Proj_401	Target communication error.(cmd=CF SCR...	2005-05-27 10:09:42.462
top server	Proj_401	Target communication error.(cmd=CF SCR...	2005-05-27 10:09:19.780

Item	Description
Server Name	The name of the server which manages the target which had an error.
Target Name	The name of the target which had an error.
Error Detail	Target communication error: ( SCREEN WIDE,res=?) *See next page
Execute Date	Date of command executed

## Error message description (part of errors)

There are some error comments on the error detail column as follows;

### Global setting error

Error Message	Description
Target command send error. (cmd=XXX* <sup>1</sup> )	Failed to send the command.
Target command receive error. (cmd=XXX)	Failed to receive the command
Target command communication error. (cmd=XXX,res=YYY* <sup>2</sup> )	Unexpected response to the command

### Condition setting error

Error Message	Description
Target condition command send error. (cmd=XXX)	Failed to send the condition command
Target condition command receive error. (cmd=XXX)	Failed to receive the condition command
Target condition command communication error. (cmd=XXX, res=YYY)	Unexpected response to the condition command
Target condition command communication error. (cmd=XXX, res=YYY:ZZZ* <sup>3</sup> )	Unexpected response to the condition command

\*<sup>1</sup> XXX means each command name.

\*<sup>2</sup> YYY means response to the command.

\*<sup>3</sup> ZZZ means expected response to the command.

### PJ update error

Error Message	Description
Update PJ file error.	The PJ Master failed to update firmware of the projector.
Update PJ FTP error	FTP error during updating firmware of the projector.

### PJ-Net update error


Error Message	Description
Update PJ-Net write error.	Failed to create PJ-Net file
Update PJ-Net file error:	Failed to update PJ-Net file or file type
Update PJ-Net FTP error:	FTP error during updating firmware of the Network Board

### PJ Master update error

Error Message	Description
Update PJ Master Error: Failed to start the program.	Failed to start the update program
Update PJ Master Error: The version is not the same.	The PJ Master version error
Update PJ Master Error: Failed to stop the service.	Failed to stop the service
Update PJ Master Error: Failed to copy the file.	Failed to copy the update files
Update PJ Master Error: Failed to run batch file.	Failed to run the batch file
Update PJ Master Error: Failed to start the service.	Failed to start the service.
Update PJ Master Error: Internal error occurred.	Internal error occurred.

## Reading of alert log

Displays the alert logs. Records the information when the alert occurs and is canceled.

Select **Alert** from **Display - Log** menu or click  button on the tool bar.

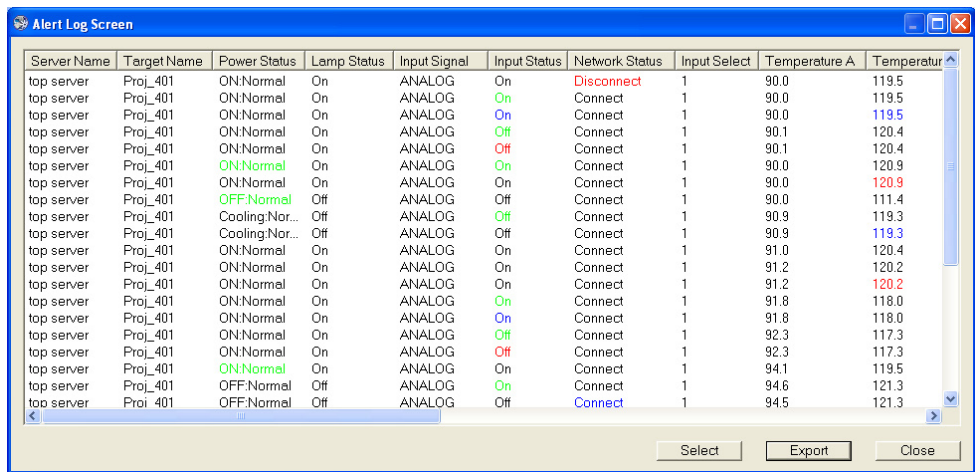
Before executing the Alert Log command, first select a top server; a sub server or a target. The alert logs on the selected server or target will be displayed on the alert log screen window.

If there is the alert item on the target or server in the network, the alert information is indicated as follows;

Value indicated with red : Alert occurred

Value indicated with green : Status changed

Value indicated with blue : Alert has been resolved



Server Name	Target Name	Power Status	Lamp Status	Input Signal	Input Status	Network Status	Input Select	Temperature A	Temperature B
top server	Proj_401	ON:Normal	On	ANALOG	On	Disconnect	1	90.0	119.5
top server	Proj_401	ON:Normal	On	ANALOG	On	Connect	1	90.0	119.5
top server	Proj_401	ON:Normal	On	ANALOG	On	Connect	1	90.0	119.5
top server	Proj_401	ON:Normal	On	ANALOG	Off	Connect	1	90.1	120.4
top server	Proj_401	ON:Normal	On	ANALOG	Off	Connect	1	90.1	120.4
top server	Proj_401	ON:Normal	On	ANALOG	On	Connect	1	90.0	120.9
top server	Proj_401	ON:Normal	On	ANALOG	On	Connect	1	90.0	120.9
top server	Proj_401	OFF:Normal	Off	ANALOG	Off	Connect	1	90.0	111.4
top server	Proj_401	Cooling:Nor...	Off	ANALOG	Off	Connect	1	90.9	119.3
top server	Proj_401	Cooling:Nor...	Off	ANALOG	Off	Connect	1	90.9	119.3
top server	Proj_401	ON:Normal	On	ANALOG	On	Connect	1	91.0	120.4
top server	Proj_401	ON:Normal	On	ANALOG	On	Connect	1	91.2	120.2
top server	Proj_401	ON:Normal	On	ANALOG	On	Connect	1	91.2	120.2
top server	Proj_401	ON:Normal	On	ANALOG	On	Connect	1	91.8	118.0
top server	Proj_401	ON:Normal	On	ANALOG	On	Connect	1	91.8	118.0
top server	Proj_401	ON:Normal	On	ANALOG	Off	Connect	1	92.3	117.3
top server	Proj_401	ON:Normal	On	ANALOG	Off	Connect	1	92.3	117.3
top server	Proj_401	ON:Normal	On	ANALOG	On	Connect	1	94.1	119.5
top server	Proj_401	OFF:Normal	Off	ANALOG	On	Connect	1	94.6	121.3
top server	Proj_401	OFF:Normal	Off	ANALOG	Off	Connect	1	94.5	121.3

Item	Description
Server Name	The name of the server which manages the target which had an alert.
Target Name	The name of the target which had an alert.
Power Status	Status of the network equipment (Power-on, StandBy, Cooling, CountDown, etc.)
Lamp Status	Status of lamp (On, Off, Error; Replace, indicated with lamp1, lamp2, lamp3, lamp4 sequentially)
Input Signal	Name of input signal (Analog, Digital, S-Video, Video, Y/Cr/Cb, Y/Pr/Pb, etc.)
Input Status	Status of input signal (On, Off, Interrupted)
Input Select	Displays input mode (1,2,3 etc)
Network Status	Status of network connection (Disconnect, Connect)
Temperature A	Displays inside temperature A of the equipment (in Celsius or Fahrenheit)
Temperature B	Displays inside temperature B of the equipment (in Celsius or Fahrenheit)
Temperature C	Displays inside temperature C of the equipment (in Celsius or Fahrenheit)
Lamp Time	Displays lamp use time (lamp1, lamp2, lamp3, lamp4)
IP Address	Displays IP address of the equipment
Model Name	Displays model name of the equipment
Projector Time	Displays accumulated projector use time
PJ-Net Ver:	Displays the version of the Network Board firmware or PJ Master
PJ Ver:	Displays the firmware version of the projector
Execute Date	Displays the alert occurred date

\* In the csv file, information which alert occurred is indicated with @, information which alert has been resolved is indicated with # and information which status changed is indicated with \*.

\* The alert log of the last selected target or server will be displayed when selecting multiple targets or servers.

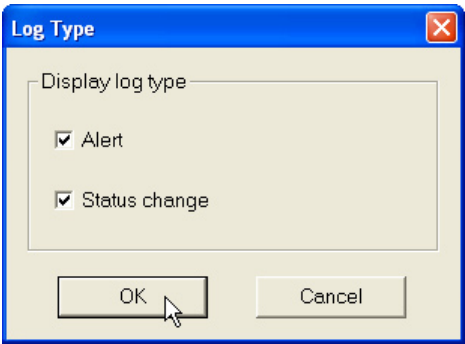
## Changing the display for each log type

Click **Select** on the alertlog screen window. The log type selection window will appear. Tick the type “Alert” and/or “Status change” and then click **OK**.

The contents on the alert log window will change according to the above selection.

\* To judge the condition of the target “Alert” or “Status” when the connection error occurs, it is according to your selection of the connection event during the installation. (p.12)

\* When un-checking both of them, it will be the same treatment when checking both of them.



Alert log screen window when selecting “Alert” type

Server Name	Target Name	Power Status	Lamp Status	Input Signal	Input Status	Network Status	Input Select	Temperature A	Temperature E
top server	Proj_401	ON:Normal	On	ANALOG	On	Disconnect	1	90.0	119.5
top server	Proj_401	ON:Normal	On	ANALOG	On	Connect	1	90.0	119.5
top server	Proj_401	ON:Normal	On	ANALOG	Off	Connect	1	90.1	120.4
top server	Proj_401	ON:Normal	On	ANALOG	On	Connect	1	90.0	120.9
top server	Proj_401	Cooling:Nor...	Off	ANALOG	Off	Connect	1	90.9	119.3
top server	Proj_401	ON:Normal	On	ANALOG	On	Connect	1	91.0	120.4
top server	Proj_401	ON:Normal	On	ANALOG	On	Connect	1	91.2	120.2
top server	Proj_401	ON:Normal	On	ANALOG	On	Connect	1	91.2	120.2
top server	Proj_401	ON:Normal	On	ANALOG	On	Connect	1	91.8	118.0
top server	Proj_401	ON:Normal	On	ANALOG	Off	Connect	1	92.3	117.3
top server	Proj_401	OFF:Normal	Off	ANALOG	Off	Connect	1	94.5	121.3
top server	serverB	-	-	-	-	Disconnect	-	-	-
top server	serverA	-	-	-	-	Connect	-	-	-
top server	Proj_401	OFF:Normal	Off	ANALOG	Off	Disconnect	1	94.5	121.6
top server	Proj_407	-	-	-	-	Disconnect	-	-	-
top server	Proj_406	-	-	-	-	Disconnect	-	-	-

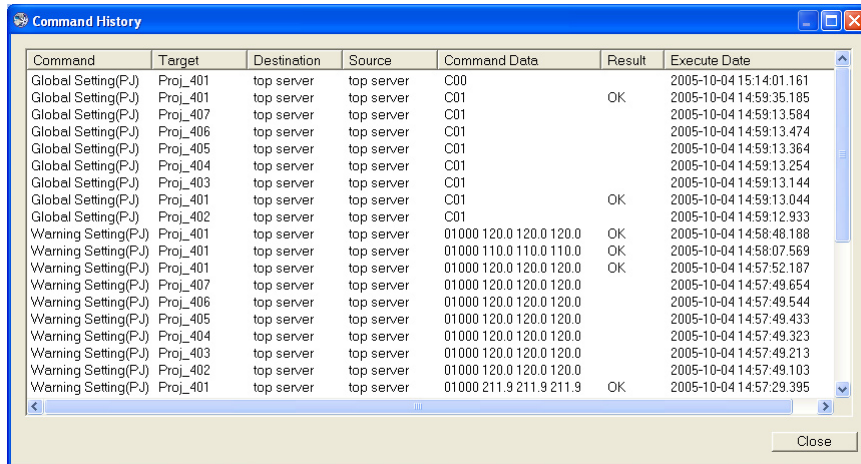
Alert log screen window when selecting “Status change” type

Server Name	Target Name	Power Status	Lamp Status	Input Signal	Input Status	Network Status	Input Select	Temperature A	Temperature B
top server	Proj_401	ON:Normal	On	ANALOG	On	Connect	1	90.0	119.5
top server	Proj_401	ON:Normal	On	ANALOG	Off	Connect	1	90.1	120.4
top server	Proj_401	ON:Normal	On	ANALOG	On	Connect	1	90.0	120.9
top server	Proj_401	OFF:Normal	Off	ANALOG	Off	Connect	1	90.0	111.4
top server	Proj_401	Cooling:Nor...	Off	ANALOG	Off	Connect	1	90.9	119.3
top server	Proj_401	ON:Normal	On	ANALOG	On	Connect	1	91.8	118.0
top server	Proj_401	ON:Normal	On	ANALOG	Off	Connect	1	92.3	117.3
top server	Proj_401	ON:Normal	On	ANALOG	On	Connect	1	94.1	119.5
top server	Proj_401	OFF:Normal	Off	ANALOG	On	Connect	1	94.6	121.3
top server	Proj_401	OFF:Normal	Off	ANALOG	Off	Connect	1	92.3	129.9

## Reading of command history log

Displays the command executing history on the own server.

Select **Command History** from **Display - Log** menu or click  button on the tool bar.



Command	Target	Destination	Source	Command Data	Result	Execute Date
Global Setting(PJ)	Proj_401	top server	top server	C00		2005-10-04 15:14:01.161
Global Setting(PJ)	Proj_401	top server	top server	C01	OK	2005-10-04 14:59:35.185
Global Setting(PJ)	Proj_407	top server	top server	C01		2005-10-04 14:59:13.584
Global Setting(PJ)	Proj_406	top server	top server	C01		2005-10-04 14:59:13.474
Global Setting(PJ)	Proj_405	top server	top server	C01		2005-10-04 14:59:13.364
Global Setting(PJ)	Proj_404	top server	top server	C01		2005-10-04 14:59:13.254
Global Setting(PJ)	Proj_403	top server	top server	C01		2005-10-04 14:59:13.144
Global Setting(PJ)	Proj_401	top server	top server	C01	OK	2005-10-04 14:59:13.044
Global Setting(PJ)	Proj_402	top server	top server	C01		2005-10-04 14:59:12.933
Warning Setting(PJ)	Proj_401	top server	top server	01000 120.0 120.0 120.0	OK	2005-10-04 14:58:48.188
Warning Setting(PJ)	Proj_401	top server	top server	01000 110.0 110.0 110.0	OK	2005-10-04 14:58:07.569
Warning Setting(PJ)	Proj_401	top server	top server	01000 120.0 120.0 120.0	OK	2005-10-04 14:57:52.187
Warning Setting(PJ)	Proj_407	top server	top server	01000 120.0 120.0 120.0		2005-10-04 14:57:49.654
Warning Setting(PJ)	Proj_406	top server	top server	01000 120.0 120.0 120.0		2005-10-04 14:57:49.544
Warning Setting(PJ)	Proj_405	top server	top server	01000 120.0 120.0 120.0		2005-10-04 14:57:49.433
Warning Setting(PJ)	Proj_404	top server	top server	01000 120.0 120.0 120.0		2005-10-04 14:57:49.323
Warning Setting(PJ)	Proj_403	top server	top server	01000 120.0 120.0 120.0		2005-10-04 14:57:49.213
Warning Setting(PJ)	Proj_402	top server	top server	01000 120.0 120.0 120.0		2005-10-04 14:57:49.103
Warning Setting(PJ)	Proj_401	top server	top server	01000 211.9 211.9 211.9	OK	2005-10-04 14:57:29.395

Item	Description
Command	Name of the executing command. * See table below.
Target	Name of the target or server to send the command. (Proj_05)
Destination	Name of the server to execute the command finally. (server name) (broadcast)
Source	Name of the top server (top server name)
Command Data	Command data (C01, C00, CF SCREEN WIDE%CR MODELNM=PLC-XP50=0&CR STATUS=0=I) * See table below.
Result	Result of the command execution. success: OK, failure: NG, retry : blank
Execute Date	Command executed date

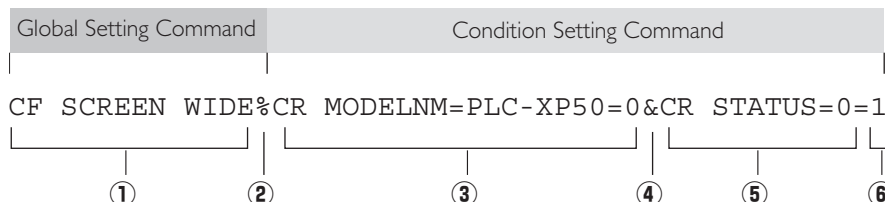
### Description of the command and data

Command	Command data
Update Group Info	none
Warning Setting(PJ)	(Warning Time) (Warning temperature A) (Warning temperature B) (Warning temperature C)
Global Setting(PJ) Global Setting(PDP)	(Global setting command) % (Condition)
PJ Master Update	PJ Net Master V(version)
PJ-Net Update	(Binary file name) % (Condition)
PJ Update	(Binary file name) % (Condition)



## Format of the command data

The format of the command data is as follows;



- ① Global setting command: change screen mode to "WIDE" (CF SCREEN WIDE)
- ② "%" Connection mark between global setting command and condition setting command.
- ③ 1st condition setting command (CR MODELNM=PLC-XP50=0)
- ④ "&" Connection mark between condition setting commands
- ⑤ 2nd condition setting command (CR STATUS=0)
- ⑥ Retry flag, 1=On, 0=Off

## Updating

### PJ Master software updating

Updates the PJ Master software in the multiple servers all at once.

Before taking the procedure below, set the CD-ROM provided with a new version of PM Master software onto your computer.

1. Select a server you intend to update the PJ Master software. If you select a top server or a server which has child servers, the servers under the selected server are targets to update the PJ Master software.
2. Select **PJ Master Update...** from **Update** menu.
3. Browse and select a "Update.def" file in the "US" - "PMS" folder in the CD-ROM.
4. Click **Open** and then the confirmation dialog will appear. Click **Yes** to execute updating the PJ Master software.
  - The updating command is sent to all the target servers to update the software at each server. On the target server, the DOS prompt window appears on the screen to indicate the updating process. When updating ended successfully, the prompt window closes automatically. If the PJ Master status window is opening, it also closes automatically.

\* To check that the PJ Master software was updated successfully, select **Version** from **Help** menu for the top server; and check the version indication on "PJ-Net Ver:" column on the status list view window for sub servers .

\* If there are disconnected servers during command executing, the upper server monitors connection status every 1 minute and keeps command until the command delivers to all the linked servers.

\* For further information of the PJ Master update file, please consult your sales dealer.

## Network Board firmware updating

Updates the firmware of the Network Board on the multiple targets all at once.

Before taking the procedure below, put a supplied binary file "\*\*\*\*\*.bin" on the desktop of your computer.

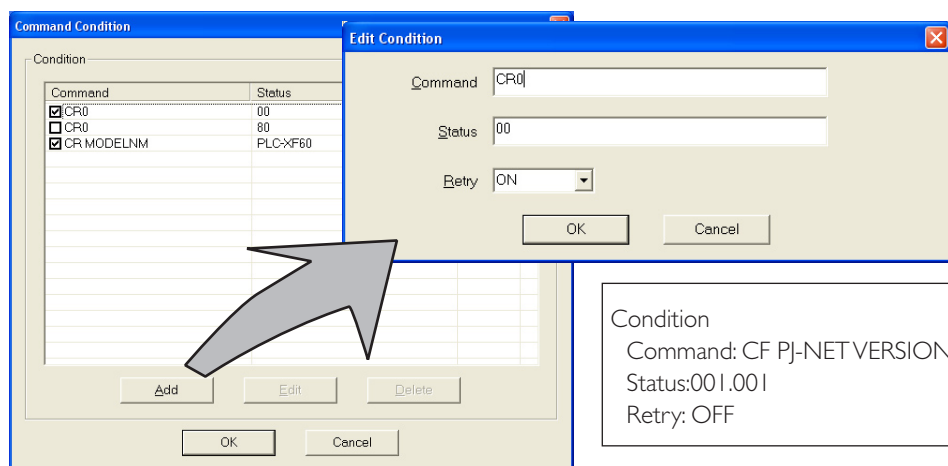
1. Select a target you intend to update the firmware of the Network Board. If you select a top server or a server which has the targets, the targets under the selected server are targets to update the firmware of the Network Board. Also you can select multiple targets on the status list view window individually.
2. Select **PJ-Net Update** from **Update** menu.
3. Browse and select a prepared "\*\*\*\*\*.bin" file on the desktop.
4. Click **Open**, and then the another confirmation dialog will appear.
5. Click **Condition** if you want to set condition command, or click **OK** if you want not to set the condition command.

Take below steps if you click **Condition**.

5-1. The window to set the condition to execute the updating appears. This is the same setting window used in the PJ Global Setting or PDP Global Setting.

5-2. Tick check box next to the command name you want to use for condition check.

\* To make a new condition check command, click **Add** to open the edit condition window and enter command and status, and set retry on or off. See item "Condition setting" (p.33) for further details. Click **OK** to set a new condition. The setting window closes.



5-3. Click **OK** to start updating.

The updating command is sent to all the target servers and each server starts updating the firmware of the targets sequentially.

- \* To check that the firmware of the Network Board was updated successfully, check the version indication on "PJ-Net Ver." column on the status list view window.
- \* If there are disconnected servers during command executing, the upper server monitors connection status every 1 minute and keeps command until the command delivers to all the linked servers.
- \* Updating is only executed when the ID in the update file coincides with the Network Board ID.
- \* For further information of the binary update file, please consult your sales dealer.

## Projector firmware updating

Updates the firmware in the multiple projectors all at once.

Before taking the procedure below, put a supplied binary file “\*\*\*\*.bin” on the desktop of your computer.

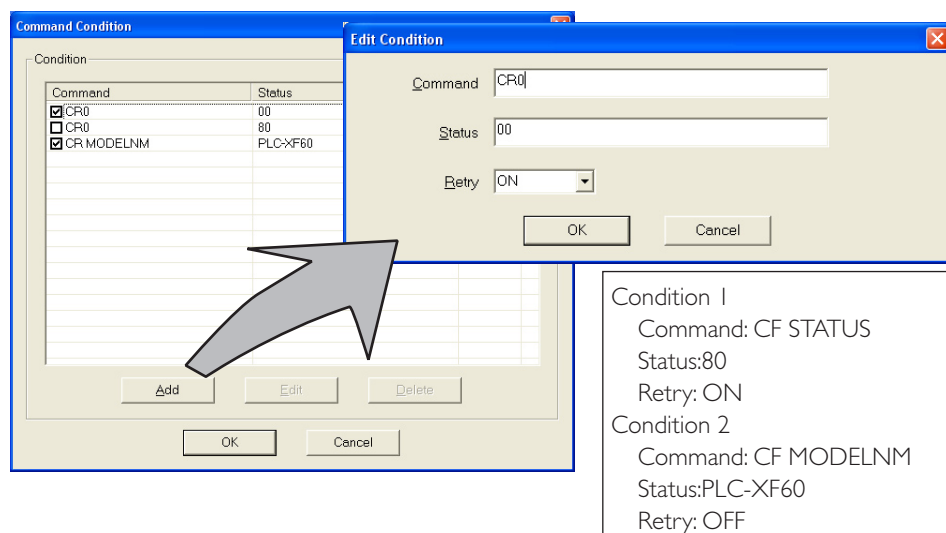
1. Select a target you intend to update the firmware. If you select a top server or a server which has the targets, the targets under the selected server are targets to update the firmware. Also you can select multiple targets on the status list view window individually.
2. Select **PJ Update** from **Update** menu.
3. Browse and select a prepared “\*\*\*\*.bin” file on the desktop.
4. Click **Open** to execute the updating. The another confirmation dialog will appear.
5. Click **Condition** if you want to set condition command, or click **OK** if you want not to set the condition command.

Take below steps if you click **Condition**.

5-1. The window to set the condition to execute the updating appears. This is the same setting window used in the PJ Global Setting.

5-2. Tick check box next to the command name you want to use for condition check.

\* To make a new condition check command, click **Add** to open the edit condition window and enter command and status, and set retry on or off. See item “Condition setting” (p.28) for further details. Click **OK** to set a new condition. The setting window closes.



5-3. Click **OK** to start updating.

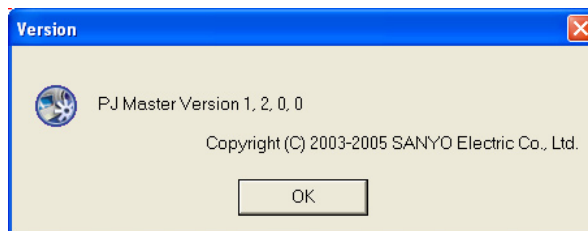
The updating command is sent to all the target servers and each server starts updating the firmware of the projectors sequentially.

- \* To check that the firmware of the target was updated successfully, check the version indication on “PJ Ver.” column on the status list view window.
- \* If there are disconnected servers during command executing, the upper server monitors connection status every 1 minute and keeps command until the command is delivered to all the linked servers.
- \* If there are disconnected targets during command executing, the parent server monitors connection status every 1 minute and keeps command until the connection is established.
- \* This command is only available if the projector supports updating via the network.
- \* For further information of the binary update file, please consult your sales dealer.

## Version information

To display the version of the PJ Master, Select **Version** from **Help** menu. The following version display dialog will appear.

Click **OK** to close the dialog.



# 4

## Chapter 4 Advanced setting

---

## Customizing the command list

The available commands in the Global Setting menu are defined by the text file "Define\_Pj.def" for projector or "Define\_PDP.def" for PDP monitor. They are located on folder "Program" in folder "PMS". When you change the TEXT(command) on the Global Setting window, this file will be updated automatically. If you want to add new commands, edit this file depending on your environment.

### Define file for projector

The default setting in the "Define\_Pj.def" file is described as follows;

```
[GROUP LIST]
COUNT      = 15
GROUP1      = POWER
GROUP2      = VOLUME
GROUP3      = MENU
GROUP4      = DATE
GROUP5      = TIME
GROUP6      = SCREEN
GROUP7      = BLUEBACK
GROUP8      = DISPLAY
GROUP9      = LOGO
GROUP10     = PMANE
GROUP11     = PJNAME
GROUP12     = SMTP
GROUP13     = ADMINI
GROUP14     = MAILI
GROUP15     = FANSPEED

[POWER]
SEC_MODE    = EXCLUSIVE
POWER ON    = C00
POWER OFF   = C01

[VOLUME]
SEC_MODE    = EXCLUSIVE
VOLUME UP   = C09
VOLUME DOWN = C0A

[MENU]
SEC_MODE    = EXCLUSIVE
MENU ON MODE = C1C
MENU OFF MODE = C1D

[DATE]
DATE SETTING = LF DATE 2003/11/29

[TIME]
TIME SETTING = LF TIME 12:00

[SCREEN]
SEC_MODE    = EXCLUSIVE
SCREEN NORMAL = CF SCREEN NORMAL
SCREEN WIDE   = CF SCREEN WIDE

[BLUEBACK]
SEC_MODE    = EXCLUSIVE
BLUE BACK ON = CF BBACK ON
BLUE BACK OFF = CF BBACK OFF
```

```

[DISPLAY]
SEC_MODE      = EXCLUSIVE
DISPLAY ON    =CF DISP ON
DISPLAY OFF   =CF DISP OFF

[LOGO]
SEC_MODE      = EXCLUSIVE
LOGO ON       =CF LOGO ON
LOGO OFF      =CF LOGO OFF

[PMANE]
SEC_MODE      = EXCLUSIVE
POWER MANAGEMENT ON    =CF P-MANE ON
POWER MANAGEMENT OFF   =CF P-MANE OFF

[PJNAME]
PJ NAME SETTING          =LF PRJNAME PROJECTOR.I

[SMTP]
SMTP SETTING              =LF SMTP 192.168.0.1

[ADMINI]
ADMINI ADDRESS SETTING    =LF ADMIN admin@xxx.xxx

[MAILI]
MAILI ADDRESS SETTING     =LF MAILI userI@xxx.xxx

[FANSPEED]
SEC_MODE      = EXCLUSIVE
FANSPEED MAX  =CF FANSPEED MAX
FANSPEED NORMAL =CF FANSPEED NOR

```

## Define file for PDP monitor

The default setting in the "Define\_PDP.def" file is described as follows;

```

[GROUP LIST]
COUNT      = 3
GROUP1      = POWER
GROUP2      = VOLUME
GROUP3      = MENU

[POWER]
SEC_MODE    = EXCLUSIVE
POWER ON    = C00
POWER OFF   = C01

[VOLUME]
SEC_MODE    = EXCLUSIVE
VOLUME UP   = C09
VOLUME DOWN = C0A

[MENU]
SEC_MODE    = EXCLUSIVE
MENU ON MODE = C1C
MENU OFF MODE = C1D

```

## Format of the define file

Describes the operators and format of the define file as follows;

```
[GROUP LIST]
COUNT = {number of the total group}
GROUP1 = {group name1}*1
GROUP2 = {group name2}
      :
      :
GROUPn = {group name n}
                                     *1 Group name is a unique identifier.

[{group name 1}]
SEC_MODE = EXCLUSIVE *2
{command description1} = {command}
{command description2} = {command}
                                     *2 Use when selecting an exclusive command among 2 or more
                                     commands

[{group name 2}]
{command description} = {command}
      :
      :

[{group name n}]
{command description} = {command}
```

### Example

If you want to add a new command "INPUT SELECTION" in the "Global Setting", edit "Define\_PJ.def" file as follows;

Modify group number to "16".

```
COUNT = 16
```

Add a new group number and group name.

```
GROUP16 = INPUT SELECTION
```

Add a new group specification

```
[INPUT SELECTION]
SEC_MODE = EXCLUSIVE
INPUT 1 = C05
INPUT 2 = C06
INPUT 3 = C07
INPUT 4 = C08
```



## Predefined command list

### Executing commands

<i>Command name</i>	<i>Command</i>	<i>Description</i>
POWER ON	C00	Turns on the target
POWER OFF	C01	Turns off the target
VOLUME UP	C09	Increase sound volume one step
VOLUME DOWN	C0A	Decrease sound volume one step
MENU ON	C1C	Displays osd menu on the screen
MENU OFF	C1D	Switches off osd menu on the screen
DATE SETTING	LF DATE YYYY/MM/DD	Sets date, ex:2005/05/18
TIME SETTING	LF TIME hh:mm	Sets time, ex:16:45
SCREEN NORMAL	CF SCREEN NORMAL	Switches screen to "Normal"
SCREEN WIDE	CF SCREEN WIDE	Switches screen to "Wide"
SCREEN FULL	CF SCREEN FULL	Switches screen to "Full"
BLUE BACK ON	CF BBACK ON	Sets blue back function on
BLUE BACK OFF	CF BBACK OFF	Sets blue back function off
DISPLAY ON	CF DISP ON	
DISPLAY OFF	CF DISP OFF	
LOGO ON	CF LOGO ON	Sets logo display on while starting up
LOGO OFF	CF LOGO OFF	Sets logo display off while starting up
POWER MANAGE- MENT ON	CF P-MANA ON	Sets power management function on
POWER MANAGE- MENT OFF	CF P-MANA OFF	Sets power management function off
PROJECTOR NAME SETTING	LF PRJNAME xxxxxx	Sets projector name "xxxxxx"
SMTP SETTING	LF SMTP 192.168.0.1	Sets smtp address "192.168.0.1"
ADMINISTRATOR ADDRESS SETTING	LF ADMIN admin@yourProvider.com	Sets administrator e-mail address
MAIL ADDRESS SETTING	LF MAIL usr1@yourProvider.com	Sets e-mail address
FAN SPEED SETTING MAXIMUM	CF FANSPEED MAX	Sets fan speed mode to maximum
FAN SPEED SETTING NORMAL	CF FANSPEED NOR	Sets fan speed mode to normal
INPUT 1 SELECTION	C05	Sets input selection "Input 1"
INPUT 2 SELECTION	C06	Sets input selection "Input 2"
INPUT 3 SELECTION	C07	Sets input selection "Input 3"
INPUT 4 SELECTION	C08	Sets input selection "Input 4"

\* Some kinds of commands may not effective or may differ depending on each model. For further information, please contact your sales dealer.

## Condition check commands and response

Command name	Command	Response	Description
Power status check	CR0 or CR STATUS	00	Power on
		80	Stand-by
		40	Count down
		20	Cooling
Lamp status check	CR LAMPSTS	00	Lamp On, only available for multiple lamps model.
		80, 40, 20, 10	Lamp off
Input source	CR SOURCE	ANALOG	Analog input
		DIGITAL	Digital input
		S-VIDEO	S-video input
		VIDEO	Video input
Input status	CR SIGNAL	ON	Signal exists
		OFF	No signal
Input Select	CR INPUT	1,2,3,4,5	Selected input mode
Temperature	CR TEMP	<i>temperature</i>	Actual temperature
Lamp use time	CR LAMPH	<i>time</i>	Lamp use time in hours
Projector use time	CR PROJH	<i>time</i>	Accumulated use time in hours
Network board version	LR PJNETVERSION	<i>version number</i>	Firmware version of network board
Model Name	CR MODELNM	<i>model name</i>	Model name, "PLC-XF60" etc.

\* Some kinds of commands may not effective or may differ depending on each model. For further information, please contact your sales dealer.

# Create the group information with a text file

The PJ Master enables you to import the group information of the network from the text file which defines the target and server information. To import the group information from the text files, prepare a defined file based on the format described on item "Network tree data format" below. How to import the defined file, refer to item "Import the group information from the defined file" (p.23).

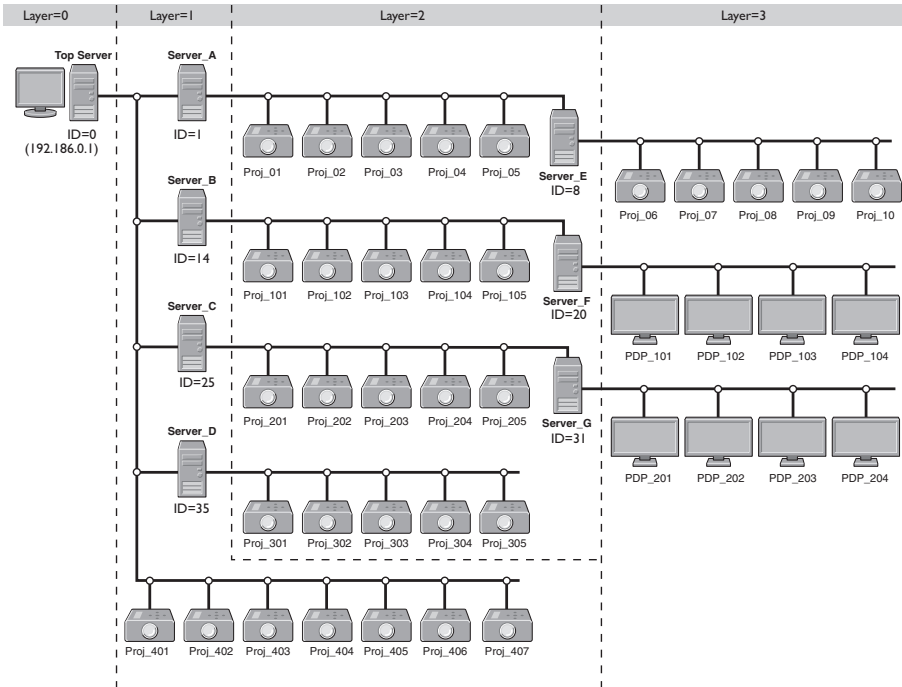
## Network tree data format

The defined file is a tab-delimited file created with spreadsheet software and it is defined as follows. Refer to item "Practical example of defined file" below for further information.

Column	Description (example)
ID code	Sequence number (1,2,3,4,...)
Target name	Server name or Target Name (Server_A, Server_B, Proj_01, Proj_02, PDP_10)
Target property	0: Server, 1: Projector, 2: PDP (0,1,2)
IP Address	Assigned IP address (192.168.0.1)
Parent ID code	ID of the server to which the target links. The top server should be set "0"
Layer	0: top layer, 1: 2nd layer, 2: 3rd layer,...(0,1,2,3..)
Disconnect number	Number of disconnected targets (1,2,3,4,5...)
Telnet password	Password for telnet login to the target (blank: no password)
License key	License key code for the PJ Master
Updated Date	(2005-05-28 12:15:00)

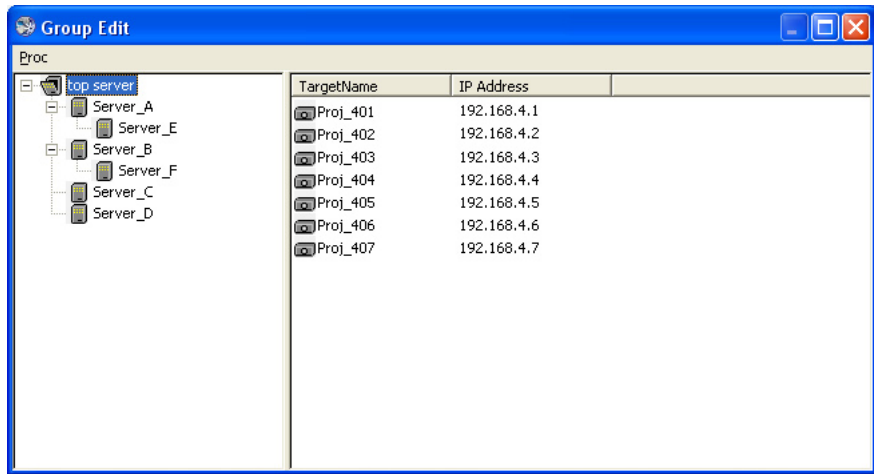
## Practical example of the defined file

Describes how to create the defined file if you setup the tree formatted network as the below environment.



The table below is an example of defined file created with spreadsheet software. Export it as the tab-delimited text file.

ID code	Target property		Parent ID code			Disconnect number		Telnet password	License key	Updated Date
	Target name		IP Address	Layer						
1	Top Server	0	192.168.0.1	0	0	5		xxxxx1-xxxxxA		2005-05-28 12:15:00.00
2	Server A	0	192.168.0.2	1	1	5		xxxxx2-xxxxxB		2005-05-28 12:15:00.00
3	Proj_01	1	192.168.0.3	2	2	5				2005-05-28 12:15:00.00
4	Proj_02	1	192.168.0.4	2	2	5				2005-05-28 12:15:00.00
5	Proj_03	1	192.168.0.5	2	2	5				2005-05-28 12:15:00.00
6	Proj_04	1	192.168.0.6	2	2	5				2005-05-28 12:15:00.00
7	Proj_05	1	192.168.0.7	2	2	5				2005-05-28 12:15:00.00
8	Server E	0	192.168.0.8	2	2	5		xxxxx3-xxxxxC		2005-05-28 12:15:00.00
9	Proj_06	1	192.168.0.9	8	3	5				2005-05-28 12:15:00.00
10	Proj_07	1	192.168.0.10	8	3	5				2005-05-28 12:15:00.00
11	Proj_08	1	192.168.0.11	8	3	5				2005-05-28 12:15:00.00
12	Proj_09	1	192.168.0.12	8	3	5				2005-05-28 12:15:00.00
13	Proj_10	1	192.168.0.13	8	3	5				2005-05-28 12:15:00.00
14	Server B	0	192.168.0.14	1	1	5		xxxxx4-xxxxxD		2005-05-28 12:15:00.00
15	Proj_101	1	192.168.0.15	14	2	5				2005-05-28 12:15:00.00
16	Proj_102	1	192.168.0.16	14	2	5				2005-05-28 12:15:00.00
17	Proj_103	1	192.168.0.17	14	2	5				2005-05-28 12:15:00.00
18	Proj_104	1	192.168.0.18	14	2	5				2005-05-28 12:15:00.00
19	Proj_105	1	192.168.0.19	14	2	5				2005-05-28 12:15:00.00
20	Server F	0	192.168.0.20	14	2	5		xxxxx5-xxxxxE		2005-05-28 12:15:00.00
21	PDP_101	2	192.168.0.21	20	3	5				2005-05-28 12:15:00.00
22	PDP_102	2	192.168.0.22	20	3	5				2005-05-28 12:15:00.00
23	PDP_103	2	192.168.0.23	20	3	5				2005-05-28 12:15:00.00
24	PDP_104	2	192.168.0.24	20	3	5				2005-05-28 12:15:00.00
25	Server C	0	192.168.0.25	1	1	5		xxxxx6-xxxxxF		2005-05-28 12:15:00.00
26	Proj_201	1	192.168.0.26	25	2	5				2005-05-28 12:15:00.00
27	Proj_202	1	192.168.0.27	25	2	5				2005-05-28 12:15:00.00
28	Proj_203	1	192.168.0.28	25	2	5				2005-05-28 12:15:00.00
29	Proj_204	1	192.168.0.29	25	2	5				2005-05-28 12:15:00.00
30	Proj_205	1	192.168.0.30	25	2	5				2005-05-28 12:15:00.00
31	Server G	0	192.168.0.31	25	2	5		xxxxx7-xxxxxG		2005-05-28 12:15:00.00
32	PDP_201	2	192.168.0.32	31	3	5				2005-05-28 12:15:00.00
33	PDP_202	2	192.168.0.33	31	3	5				2005-05-28 12:15:00.00
34	PDP_203	2	192.168.0.34	31	3	5				2005-05-28 12:15:00.00
35	PDP_204	2	192.168.0.35	31	3	5				2005-05-28 12:15:00.00
36	Server D	0	192.168.0.36	1	1	5		xxxxx8-xxxxxH		2005-05-28 12:15:00.00
37	Proj_301	1	192.168.0.37	36	2	5				2005-05-28 12:15:00.00
38	Proj_302	1	192.168.0.38	36	2	5				2005-05-28 12:15:00.00
39	Proj_303	1	192.168.0.39	36	2	5				2005-05-28 12:15:00.00
40	Proj_304	1	192.168.0.40	36	2	5				2005-05-28 12:15:00.00
41	Proj_305	1	192.168.0.41	36	2	5				2005-05-28 12:15:00.00
42	Proj_401	1	192.168.0.42	1	1	5				2005-05-28 12:15:00.00
43	Proj_402	1	192.168.0.43	1	1	5				2005-05-28 12:15:00.00
44	Proj_403	1	192.168.0.44	1	1	5				2005-05-28 12:15:00.00
45	Proj_404	1	192.168.0.45	1	1	5				2005-05-28 12:15:00.00
46	Proj_405	1	192.168.0.46	1	1	5				2005-05-28 12:15:00.00
47	Proj_406	1	192.168.0.47	1	1	5				2005-05-28 12:15:00.00
48	Proj_407	1	192.168.0.48	1	1	5				2005-05-28 12:15:00.00



Select **Group Edit** from **System** menu, and select **Group Import** from **Proc.** menu. Select the created defined file of group information. The imported group information will appear on the group edit window. Further details of procedure, refer to item "Import the group information from the defined file" (p.23).

